



ISA News

YOU ARE CORDIALLY INVITED TO:

The International Society of Woman Airline Pilots

34th Annual Conference

May 8 - 10, 2012

The Edgewater Hotel, Seattle, Washington

*"The Earth does not
belong to us; we belong
to earth.*

*Take only memories,
leave nothing but
footprints."-Chief*

Seattle

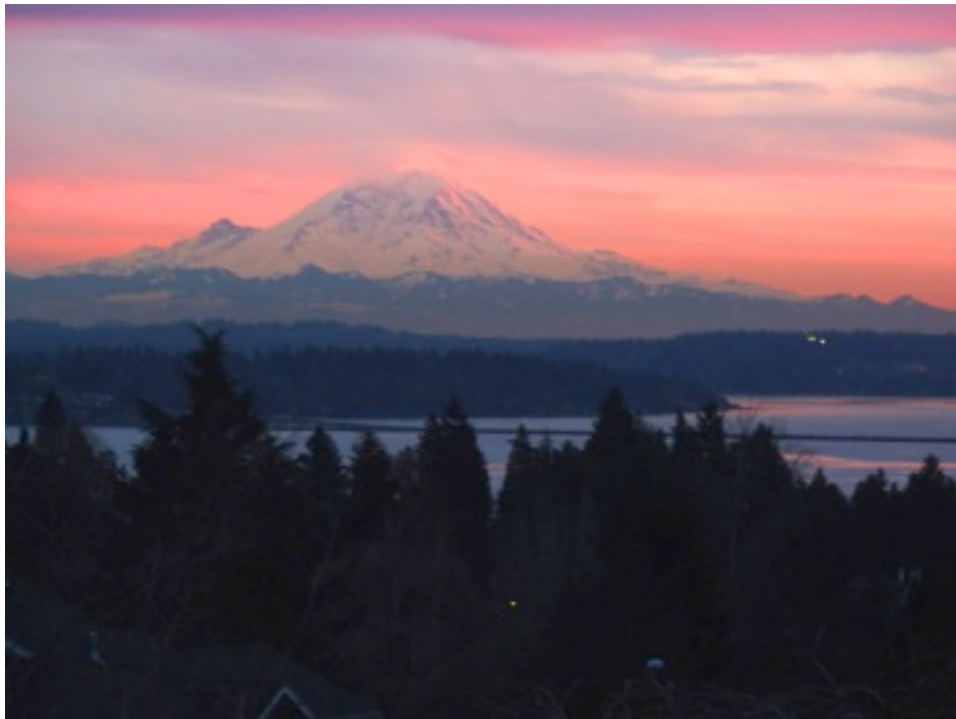


Photo compliments of ISA member Cindy Mandel. Photo of Mt. Rainier, Washington State's highest mountain, taken by Cindy's mother, Carol Mandel.



SPECIAL EDITION

2012 SEATTLE CONFERENCE

CONFERENCE SUMMARY

by Liz Jennings Clark



Conference Schedule

Tuesday, 8 May

0900-1200 Board Meeting

1400-1600 Chocolate Indulgence Tour

1800-2100 Welcome Reception sponsored by Alaska Airlines

Wednesday, 9 May

0730-0830 Breakfast

0830-1130 General Business Meeting

1130-1200 Group Photo (In uniform)

1200-1400 Awards Luncheon

1745 Leave Hotel, walk to Pier for Tillicum Cruise & Dinner. Return 2230.

Thursday, 10 May

1000 Departure for Boeing Everett Field and 787 Gallery

1530 Return

Friday, 11 May

Own time to explore Seattle!

Saturday, 12 May

HAL Inside Passage Cruise departs at 1600

I'm looking forward to welcoming ISA members, friends and family to Seattle for our 34th Annual Conference from May 8th to 10th 2012. Local Liaisons Jane Saddler and Patricia Tomich have put together a great 3 day program as well as various tours and suggestions for those of you who have a bit of extra time to spend in this great city.

Seattle is a modern vibrant city surrounded by water on one side and mountains on the other. It regularly comes in the top ten of most livable cities worldwide. With a cosmopolitan atmosphere, a number of global brands in residence (Microsoft, Boeing, Amazon and the ubiquitous Starbucks), a thriving art scene and plenty of sport opportunities – who could ask for more?

Weather

Well – what can we say – it's not California... Come prepared for some level of precipitation while you are here. The climate is mild but often damp. May is supposedly at the end of the rainy season but considering how the world climate has been acting in the last year or two bring your umbrella or at least a lightweight waterproof jacket.

The average high is 64F (18C) and low 47F (8C). There are normally only 10 rainy days in May – so let's hope we escape! Mind you May has also brought Seattle record temperatures of 93F (34C) max and 28F(-2!!) min – so who knows what we will get! The best advice is to dress in layers and thus be prepared for anything!

Visas

I expect that most non-US members are aware that they will need a visa to visit Seattle. For those of you who previously qualified for the Visa Waiver Program there is now the ESTA system in place. The familiar long green forms are no longer used, but you must fill out an online form and get ESTA approval before boarding your flight to the U.S. For those members who are not covered by this ruling please ensure you are aware of the rules applicable to you and are in possession of the correct visa to enter the US. If you are planning to come on the Alaska cruise or travel to Vancouver you may well need a multiple entry visa – please ensure you meet the requirements to re-enter the U.S.



Program Overview

For the “regulars” this will be old news but for those of you who may be just joining us I will run through our regular program.

On Tuesday morning the Board will have their pre-conference meeting. Members are welcome to attend. At 1400 we are offering the Chocolate Indulgence Tour – sign up on line.

(Introducing ISA’s QR Code. With a QR reader app on a smartphone, you can scan the code and go directly to our website’s front page.)



The Conference starts officially on Tuesday evening with the **Welcome Reception, sponsored by Alaska Airlines**. This is a chance to dress up in your finest cocktail outfit and mingle and meet old friends and new. “Heavy” hors

d’oeuvres will be served and there is a cash bar. Childcare will be provided on request (please try to give an early notification). During the evening the Silent Auction will be run with all proceeds going to our scholarship program. Bid often and bid high!

Wednesday is always a long day. There will be a breakfast buffet provided starting at 0730, then our Annual Business Meeting begins at 0830. Only members may attend. Various tours are available for guests for the day. See pages 5, 7 & 8 for ideas and booking/contact information.

After the meeting we will assemble for a group photo, then proceed to the Awards Luncheon. This is a served 3-course meal during which the Captains Club and ESV (Extra Special Volunteer) as well as the Scholarship awards will be announced.

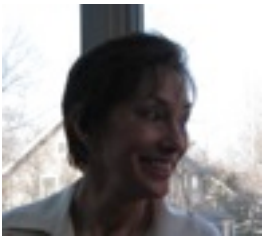
Then you will have a bit of downtime before our evening boat ride to Tillicum Village—details on page 6. We will leave the hotel on foot at 1745 and return at 2230.

On Thursday we have a special treat! Sponsored by Boeing, we will visit not only the Everett Factory, where the 747-800 and 787 are being produced, but also get an insider tour of the Dreamliner Gallery—a facility usually only accessible to airline customers for the 787. We plan to be back at the Edgewater at 1530.

For those of you who have the time, Friday is a good time to explore all the rest Seattle has to offer—see Jane Saddler’s suggestions and recommended links on page 5 of this newsletter.

On Saturday, the 12th, a number of us will be headed out to the Inside Passage—a “bucket list” trip with the Holland America Line up to Alaska. You can book until February 25th, and we have very competitive rates! Check out the details in the dedicated article. Come and be in awe of the natural beauty of the Pacific north west.

Looking forward to seeing you all in Seattle! Please feel free to contact me with any questions at lizjc81@gmail.com



Business and Pleasure

By Nancy Novaes, Chairwoman

Though it is Mid-Winter, and we are still working and playing in the snow and cold, our thoughts are beginning to turn toward springtime and our Annual May Conference. This year, we have exciting plans for our meetings in Seattle, with side trips followed by a wonderful cruise. We hope you will take advantage of the work that our Conference Committee has accomplished on our behalf. Headed by Liz Jennings Clark, our Events Chairwoman Extraordinaire, Patty Tomich and Jane Saddler have arranged for two full weeks of adventure. If two weeks is not in your plans, the three days of actual meetings will be enough to build great memories with friends for the rest of the year. Conference is always an energizing experience.

We will have some business to conduct as well at our Annual General Business Meeting on Wednesday morning. We will discuss some changes to the Bylaws necessitated by our web-driven organization. These changes are minor and pertain to Article X, our Membership Roster/Directory. The previous administration worked up the language; now it is up to us, the members, to vote on them.

With our website now being central to the administration of our club, we plan to change the language of Section 1 as follows:

Current Language:

***Section 1.** The Membership Roster is compiled from the names received by the Membership Chair on or before the thirty-first (31st) day of May each year. It is then printed and distributed to all members in July of that year.*

Proposed Language:

Section 1. The Membership Directory is compiled from the dues current members as registered by the Membership Chair and/or on the website www.iswap.org. Members are responsible for individually updating their information. The Membership Directory is available through the website.

The other point for discussion is the ISA Scholarship Awards. We have discussed this issue on the website and in the newsletter. Now we want an open discussion at the GBM to help determine the course of future awards. Since this may be an emotional issue for some members, please be advised that Roberts Rules will be strictly enforced during the actual meeting in order to ensure that all opinions will be heard.

Speaking of Roberts Rules, if you have a motion to propose, please talk to the Secretary or the Chairwoman prior to the meeting (preferably prior to the Conference) to assist with your presentation and language. Remember that once a motion is proposed, it cannot be withdrawn, even by the maker of the motion, but must be dealt with by the group. Since we are time-constrained, we want to keep our meeting on track and running smoothly.

Please check the website monthly to keep up with any discussions as well as to find out the latest news about the Conference activities. We have established a separate "Conference" page that will have information available for download, including an official Agenda. Only a few printed copies will be available. You will be responsible for downloading and printing out your own copy prior to the General Business Meeting.

See you in SEA!

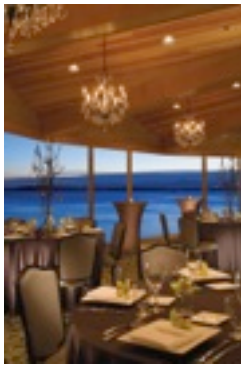
THE EDGEWATER

Our hotel choice this year has bags of character – set on the edge of Elliot Bay our function rooms and many bedrooms have stunning views out over the water and the Olympic mountain range. The rooms have been recently refurbished and feature gas fireplaces to cuddle up in front of as well as stylish spa style bathrooms with glass enclosed showers.

The Edgewater has won numerous awards including “Seattle’s Best Hotel 2010” and is described by Condé Nast’s Traveler magazine as “one of the world’s best places to stay”! The amazingly situated Six Seven Restaurant also receives rave reviews and not just for the fantastic view. All in all a top class location for ISA’s Conference 2012!

We have rates that are guaranteed until **Friday, 20 April, 2012**. Prior to this date the Hotel will accept reservations at our Group Room Rate until the contracted block is fulfilled. After 20 April, or when our block is filled, reservations will continue to be accepted on a space and rate availability basis. The rates are as follows: City Side Single and City Side Double \$229 per night. Waterside Double \$249. Charge

for a third person in the room is \$20. Children under 18 years old may stay with parents—as long as the total occupancy in the room is less than 5 for a deluxe Room and 2 for a lodge room. These rates are available from May 6th to the 12th for members who would like to come early or stay late.



Bookings must be made **directly with the hotel** through the following link: https://resweb.passkey.com/Resweb.do?mode=welcome_ei_new&eventID=7184587

Alternatively, via the following dedicated telephone numbers:
Toll Free:
800-624-0670
Local:
206-728-7000

Note: The general reservation switchboard does not have information of our special rates. These rates are subject to local taxes but include **free wifi** (a \$10 daily value!)

Your credit card will not be charged at the time of booking; however, if you do not cancel 24 hours before planned arrival, one night (incl. taxes) will be charged.

.....
Need a Roommate?
Willing to Share?
ISA Room Mom at Your Service!
Contact Lynn Austin
isaroomie@hotmail.com
Please email Lynn with your name, contact information, and length of stay. Indicate if you already have a Reservation. If you have special preferences, please indicate those, as well. Remember, be flexible!
.....



ISA CONFERENCE

REGISTRATION:

This year will be slightly different—there is a \$50 surcharge for non-Seattle residents who do not stay at the Edgewater. Once you have booked at the hotel you will be eligible for the early bird rate of \$220 USD until April 10th and \$270 USD, thereafter. Children up to 12 can register for \$120 (\$150 after April 10th) and those under 3 are free of charge. Please do let us know well in advance if you are bringing your children so we can plan childcare arrangements when necessary. ***Registration will be refunded at 100%** if cancellation is received up to two weeks in advance (24th April). Registration will be refunded at 50% if cancellation is received up to one week in advance (1st May). After this date no refunds.

Registration includes catering costs for the Welcome Reception, breakfast before the Annual Business Meeting and the 3 course Awards Luncheon as well as the Wednesday evening cruise to the Tillicum Village, planked salmon dinner and show (pg. 6). Uniquely this year you will also get the Thursday tour at no cost – a great day out visiting both Boeing’s Everett Field factory line and the 787 Dreamliner customer Gallery – a chance to see the facility normally only open to airlines purchasing the 787. It also covers costs for the Group Photo, room rental and audiovisual equipment necessary for all events. **We think that ISA offers great value for your money when compared to WIA and similar events.**

*Members are strongly encouraged to register online at ISWAP.ORG. Please Note: If you intend to register using a check, it must be sent in and received by ISA Treasurer Laurie Reeves no later than 15 April!

If you intend to register by Credit Card, you must register through ISA’s website!

WHAT'S TO DO IN SEATTLE???

SEATTLE ICONS

space needle
famous graves
original starbucks
fremont troll
hammering man



DOWNTOWN & WATERFRONT

pike place market
seattle aquarium
pioneer square

Local Liaison Jane Saddler recommends the **Museum of Flight** at Boeing Field. It is a great museum –with a wide selection of aircraft from the first primitive glider designed by the Wright brothers to the stealthy "Blackbird" capable of Mach 3 and an 80,000 ft ceiling. There are prototypes for the 737 and 747 as well as one of the 4 Concorde displayed outside Europe, and the first jet propelled "Air Force One". It welcomes 400,000 visitors a year and, according to *tripadvisor*, you could spend several days here! It is a 10-15 minute drive from the hotel, with free, copious parking. Alternatively, you can take metro bus route #124.

The Space Needle at the Seattle Center is within walking distance, albeit an uphill walk from the hotel. You can pay approximately \$14 to go to the top for great views of the city. While you are up there you can dine at the rotating restaurant. Next to the Needle is the fountain, which shoots jets of water in synchronicity with music. It's

beautiful. Also at the Center you can find a food court and the Pacific Science Center, which is mostly for kids, but is never the less, interesting. For aficionados of Avatar there is the Avatar Experience at the nearby EMP museum, founded by Paul Allen of Microsoft fame. For members arriving early and looking for a place to eat there are many **ethnic restaurants** in the Queen Anne neighborhood, which surrounds the center.

Intrepid outdoorswomen and any entourage may want to drive to the mountains to hike, either to Paradise at **Mt. Rainier**, or to one of the myriad trails off of I-90, about an hour out of town.

There is also the **ferry** to Kingston or Bainbridge, if someone wants to experience the Puget Sound. You can easily walk from the Edgewater to the downtown ferry to Bainbridge and Bremerton.

For those who have read the book, there is the tea house

on **The corner of Bitter and Sweet**.

Both Pike Market and Pioneer Square are walking distance from the hotel.

Check out the links below or **contact Jane Saddler for more information**.

jrsaddler@comcast.net

Good general sites for maps and other information:

<http://www.visitseattle.org/Essentials/Essentials-Overview.aspx>

http://www.tripadvisor.com/Tourism-g60878-Seattle_Washington-Vacations.html

<http://www.museumofflight.org/>

<http://www.spaceneedle.com/>

<http://www.empmuseum.org/index.asp>

<http://www.pikeplacemarket.org/>

<http://www.seattle.gov/tour/pioneer.htm>

Tillicum Village Argosy Cruise

Ladies, we have secured a wonderful Wednesday evening dinner cruise for you! It is the Tillicum Village Argosy Cruise. Located on beautiful Blake Island, Tillicum Village will treat us to an experience only found in the Pacific Northwest! We will board the ferry at Pier 55 which is a scenic 20 minute walk along the water from the Edgewater Hotel. On board you may choose from six different wines, five beers on tap, a variety of non-alcoholic drinks and snacks for a nominal price. We'll enjoy fabulous views on our 45 minute narrated cruise across Puget Sound and be welcomed upon arrival to the island with steamed clams. Shortly after arrival we will be treated to a delicious open fire roasted Planked Salmon buffet accompanied by a native storytelling and dance performance featuring the Coast Salish culture. After dinner we will have time to explore Blake Islands' nature trails and beach before boarding the ferry back to Seattle. You are in for a treat!

Patricia Tomich - Local Liaison

<http://www.tillicumvillage.com/>

Your **Tillicum Village Experience** includes: Scenic Cruise from downtown Seattle to Blake Island State Park, Clam Appetizer and Salmon Cooking demonstration, Fantastic Buffet Meal, and a 25 minute native-inspired show in the spirit of Coast Salish Tribes.



Gentle Reminder:

Umbrella

Layers with an outer rainproof jacket

Comfortable walking shoes

SUGGESTED GROUP TOURS

Vetted by our local hosts, Patty Léon and Jane Saddler. It's always more fun, and usually cheaper, when we can get a group to book!

* ONLY on Tuesday May 8th: Here is a tour that will go straight to most ISA gals hearts! The **Chocolate Indulgence Tour** – come and experience serotonin bliss as we sample everything from succulent brownies to chocolate cheesecake and chocolate popcorn - even a handcrafted chocolate cocktail! This tour will tickle your senses and is being specially held for us on Tuesday afternoon, only. The price is \$49 and there are only 32 places, so book your chocoholic fix now! This will be the one tour that **must be booked in advance**. Thanks to member Debbie Waingrow for suggesting this tour!

While members are doing the serious work of ISA at the Business meeting the husbands, guests and children can enjoy Seattle from both land and sea on the fabulous **Seattle Duck Tour**. This unusual amphibious trip will be one to remember – the DUKW vehicle is a 4 wheel drive US Army landing craft that can deal with both Seattle's streets and Lake Union water! The narrated tour is a blast and you'll learn something about Seattle along the way. Regular prices are \$28 adult \$17 child but we get a discount if we can fill a boat – (\$25/\$15) – so sign up with us and save a few bucks plus get picked up right at the hotel! If you are interested let us know on the (website) registration form.

Another interesting way to spend an hour or so is the **Underground Tour**—this intrigued me years ago when I first visited Seattle—a 90 minute ramble through subterranean passages that once were the main roadways and first-floor storefronts of old downtown Seattle. How did they get to be subterranean you ask? All this and more will be revealed on this unusual trip through Seattle's history. The brain child of the late Bill Siedel—an ardent preservationist who is also responsible for saving Pioneer Square - the largest collection of Victorian-Romanesque buildings in the United States. This is history with a twist! Tickets are normally \$15 but again we can get a private tour for \$12 each if enough people are interested. Let us know on the (website) registration form

Boeing Super Tour



Thursday, 10 May

Here is a real reason to stay an extra day in Seattle!! On Thursday 10 May, through the efforts of Local Liaison Patty Tomich and ISA member Cindy Mandel (who came up with the idea), as well as the **generosity of Boeing**, we can offer you a full day free tour of both the Boeing Everett factory and the (normally accessible to customer airlines only) 787 Dreamliner Gallery.

This facility is where customer airlines go to choose their options – from seats to safety facilities or the lighting that best complements their staffs’ uniforms – every option is available to touch, see and feel. The Everett factory tour takes us to the largest building in the world (!) where the 747-800 and 787’s are being built for global customers. There are some rules and regulations for this trip. Children have to be 4ft tall (122cm) and no babies are allowed. You may not bring any personal items, no (video) cameras, no phones (all bags have to be left in lockers at the Future of Flight center where the tour starts). These rules are strictly enforced.

We will be split into two groups – one will first go to the Everett facility and then later to the 787 Gallery; the other group will have the reverse tour. Both groups have lunch at Everett and time to shop in the Boeing gift shop. We will be heading out at 1000 and back to the hotel by 1530.

This is a great opportunity to see the latest Boeing products – we hope also to get one of the women who fly for Boeing as a test or instructor pilot to speak to us during this tour.... Watch this space!



<http://dreamlinergallery.com/GallerySite/Frame-Master.html>

http://www.futureofflight.org/fof_Boeing.html

As mentioned in the Fall Newsletter and later mass email we have the opportunity to take a once in a lifetime cruise up the Inside Passage to Alaska at really great prices! Booking must be made by FEBRUARY 25th!! Contact me if you want a roommate for the cruise at lizjc81@gmail.com

Ports of Call



Ketchikan - is home to the world's largest collection of totem poles, which can be viewed at Saxman Native Village, Totem Bight State Park and the Totem Heritage Center. Totems can also be viewed at many other public locations around town, and even in front of local residences. South of town at Saxman Native Village, local carvers follow in the footsteps of their ancestors by demonstrating their sculpting skills as they work on poles, canoes, paddles and masks.

Your ship docks in "downtown" and within walking distance are many interesting attractions including Ketchikan Creek, who's shoreline bends

and curves past Creek Street, a wooden boardwalk. Beginning in the prohibition era, buildings on the creek housed bordellos. Today restaurants, museums, galleries and gift shops are popular stops along the creek. It's a fun and interesting stroll along the boardwalk.

Juneau: Alaska's Capital City. Juneau is a thriving community offering a great blend of city amenities and small-town hospitality, all in the heart of Alaska's majestic mountains, rivers, glaciers, and forests. Nearly 31,000 people call Juneau home - many of them working in government, tourism, mining, and fishing industries. Fascinatingly, even today the only way to get to Juneau is by boat or airplane.

Your ship will conveniently dock in "downtown" within walking distance to many tourist sites including the Alaska State Museum and copious shopping. You can

come and go from the ship as you please and enjoy dinner onboard or ashore. Possibly a salmon bake!

Sitka: Beautiful Sitka-By-The-Sea is settled on Baranof Island, is located on the outer coast of Alaska's Inside Passage. Like most of Southeast Alaska communities, Sitka is only accessible by air or by sea. The downtown area and most tourist attractions are within easy walking distance of each other. Best known for its Russian-American heritage, you will easily be able to take in St. Michael's Cathedral, the New Archangel Dancers and many other cultural and historical highlights. Sitka is a "tender-only" port, which means there is not a deep water berth for your ship. Rather, you will tender (take a small boat) from your ship to the tourist pier. For most guests, this is a quick, easy transfer which adds a bit of adventure to your trip!

Wilderness & Scenic Highlights



Glacier Bay: The marine wilderness of Glacier Bay National Park & Preserve includes tidewater and alpine glaciers, snow-capped mountains ranges, ocean coastlines, deep fjords, freshwater rivers and lakes. It is part of one of the largest internationally protected Biospheres Reserves in the world, and is recognized by the United Nations as a World Heritage Site (UNESCO).

Discount Per- Person Fares:

Superior Verandah Suite (SY3 - 372 sq. ft including verandah): 2 lower beds which convert to a queen bed, bathroom with dual sink vanity, full size whirlpool bath/shower and additional shower stall. Large sitting area, private verandah, 1 sofa bed and floor to ceiling windows. Cruise fare ea: \$1,499.

Deluxe Verandah Cabin (VF-220 sq. ft. including verandah): 2 lower beds which convert to a queen bed, bathroom with bath/shower, sitting area, private verandah and floor to ceiling windows. Cruise fare ea: \$1,199.

Ocean View Cabin (F-174 sq. ft): 2 lower beds which convert to a queen bed, bathroom with bath/shower, sitting area and picture window. Cruise fare ea: \$1,109.

Inside Cabin (MM-151 sq. ft): 2 lower beds which convert to a queen bed, bathroom with shower, and sitting area. Cruise fare ea: \$879.

Triple & Quad occupancy guests: Sail free!

Departure taxes ea: \$129.11

Fares are per person based on double occupancy in US\$. Rates are capacity controlled and subject to change.

For further information and to secure your arrangements contact:

Annie Scrivanich

THE ALASKA DISCOUNT CRUISE GUIDE

2442 NW Market St., Suite #367

Seattle, WA 98107

Tel: 206 784 9852 or 800-544-9361

Fax: 206 781 0046

Email: annie@alaska-cruises.org

GETTING ABOUT

Once you arrive at Seattle on one of the 30 airlines that serve Sea-Tac International airport you have a few options.

◆ The cheapest will be to take the new **Light Rail** service. The signage throughout the airport is said to be good and leads you to a walkway to the train station itself. Alaskan & United baggage belts are closest – arriving on other airlines will mean a bit longer walk but you can use your baggage cart all the way. A ticket can be bought at the station with cash or credit card and costs a princely \$2.75 for the 35 minute trip. You can get out at the last stop – Westlake Center and walk to the hotel. **Be aware:** The route involves either some steps or an elevator. It will be about 15 -20 mins (downhill!). Check it out on google maps

<http://tinyurl.com/cwbqshz> (Westlake Center to 2411 Alaskan Way). You may prefer to take a cab from the Westlake Center if you have many/heavy bags.

◆ Some Seattle natives advise getting out **a couple stops earlier** – International District and take the 99 Bus (free) right to the Edgewater. Check it out on <http://www.soundtransit.org/trip-planner.xml> or <http://tripplanner.kingcounty.gov/>

◆ Another option is a shared **shuttle** or limo – prices range from \$32 for one person one way in the shuttle to \$106 for 6 people in a limousine – check out <http://www.shuttleexpress.com/airport>

◆ Finally, there are **taxis** – about \$45 -\$60 depending on traffic – a reasonable choice if travelling with 2 or 3 people. Seattle is notoriously busy and congested so the wisdom of taking a taxi will depend on your arrival time.

ODDS N' ENDS

Silent Auction

Mary Bardon has graciously offered to continue as our Silent Auction facilitator this year. Please do give some thought as to what you can obtain as an auction item. In the past we have been given packages at holiday condos and hotels, free tickets on members' airlines, jewelry, handcrafted clothing, interesting books, aviation memorabilia and much more. Mary lives in Seattle, which makes it convenient if you want to ship ahead rather than carry with you your items to donate. Please mail them to:

Mary Bardon

16648 6th Ave SW

Normandy Park, WA 98166-3514

You can also email Mary with any queries

marymaxb@hotmail.com

NOTE: For planning purposes, Mary would like to be contacted in advance about any and all items you plan to donate (shipping or bringing).

Be Aware: The Silent Auction is intended for "big ticket" items—if you donate smaller-value items, we reserve the right to assign them to the Raffle.

Do you fit any of the following categories?

I have never used the ISA website—I don't know how to sign on

It's been soooo long since I signed on, I don't know my password anymore

Even if I did sign on, I'm not sure where to look for the registration form or how to download and print the newsletter(s)

Survey? How on Earth do I find that?!

Have no fear!

Type in: WWW.ISWAP.ORG

Or, click on this "blue link" and you will be on the front page. We will have Newsletter, Survey and Conference guidance listed there. To get into the heart and soul of your website, Click on "member login". If you don't know your password, there is guidance. If worse comes to worse, on the left column, second from the bottom is a "contact us" link. When you click on it you will get a contact list. Start with membership@iswap.org. Deena is available to assist you, as needed.

For all members, our goal is to provide you with a user-friendly interface. Thank you, Angela Masson, for taking us online! We will continue to make it a site worth seeing!

Please make it easy on us - your Conference Organizers - by registering early if you intend to attend! You can cancel both registration and hotel if you do not get your requested time off, but it makes life so much easier for us if members register early and we have a better idea about the number of attendees (and guests) expected. We can negotiate more rooms and confirm the extra tours. **Note: There is a 100% refund of your registration fee up to 2 weeks prior and no room charge if you cancel at least 24hrs in advance!** Please do not leave everything until the last minute.

2012 SEATTLE CONFERENCE

IMPORTANT INFORMATION REGARDING ONLINE VERSUS PAPER (SNAIL MAIL) REGISTRATION. PLEASE READ CAREFULLY!

Members are **strongly encouraged** to register for the conference **online** at WWW.ISWAP.ORG. If you are using a credit card, this is the **only** way to register prior to the conference. Please Note: If you intend to register using a check, it must be sent via USPS with this form, and received by ISA Treasurer Laurie Reeves no later than 15 April! If you are unable to commit prior to the 15 April deadline for checks, you will have to register online using a credit card. Again, credit card users **MUST** pay online!

ADDRESS FOR MAILING:
Attention: LAURIE REEVES
ISA + 21
PO Box 510886
Key Colony Beach, FL 33051-0886

DESCRIPTION	Adult or Child	Price	Quantity
EARLY BIRD REGISTRATION: PRIOR TO 10 APRIL	ADULT	\$220 USD	
EARLY BIRD REGISTRATION: PRIOR TO 10 APRIL	CHILD (up to age 12; 3 and under, free)	\$120 USD	
LATE REGISTRATION: After 10 April	ADULT	\$270 USD	
LATE REGISTRATION: After 10 April	CHILD (up to age 12; 3 and under, free)	\$150 USD	
Non-SEA Residents NOT Staying at the Edgewater Hotel Surcharge	N/A	\$50 USD	
Chocolate Indulgence Tour: Tuesday, 8 May	N/A	\$49 USD	
TOTAL:	N/A	N/A	

NAME: _____

NAME GUEST(s) (Please include the age of children and if you will require childcare): _____

Staying for the Thursday Boeing Tour? YES/NO _____

Email: _____

PHONE and/or SKYPE: _____

Any additional contact information: _____

First ISA Conference: Yes or No (circle) _____

Special needs/Comments: _____

I require vegetarian meals (circle which one/how many): Fish___/Only Vegetarian___



As a reminder, we are still in an ELECTION CYCLE: Please take the time to participate in your organization—it's only as strong as the will of each member.

www.iswap.org
Sign In:
Elections/Voting/Surveys

*Election Calendar:
December 1 --
Nominations Open
March 15 – Nominations Close
March 16 – Elections Open
April 30 – Elections Close
May 1 – Results announced
May 15 – Term effective
All Officer and Director positions have two year term from May 15 to May 15. Coordinator positions are volunteer positions, generally for two years. All Coordinator positions are reviewed annually by the Board.*

☀️ *Make a difference at ISA!*
☀️ *Make a difference in AVIATION!*
☀️ *Volunteer for a POSITION!*