



ISA News

International Society of Women Airline Pilots

September 1998
Volume 20, No. 2

1999 Membership Contributions due now!

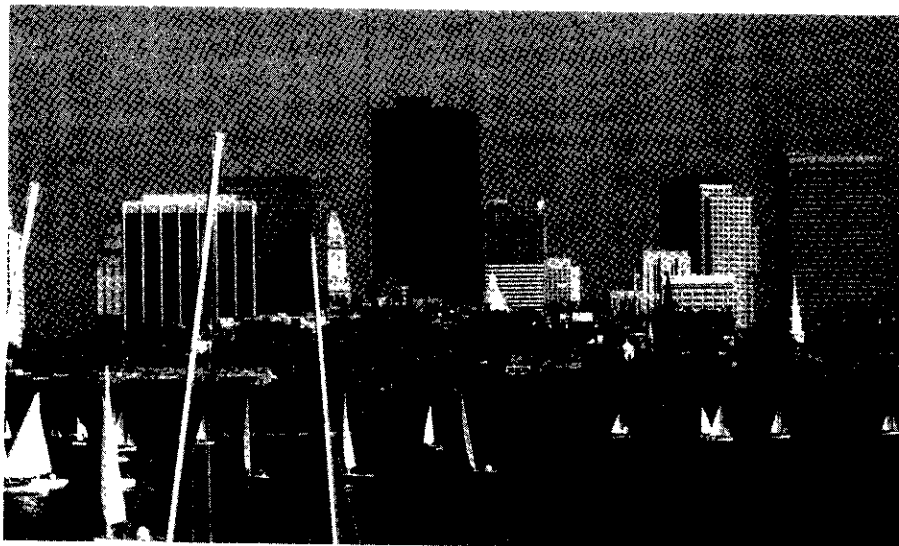
Remember they are \$45 USD
and \$15 USA for inactive

1998 ISA Scholarship Winners!

Biographies start on Page 8

ISA Ski-Days February 8 - 11

Check out the details
on Page 19



"LAYOVER LEISURE" - BOSTON, U.S.A.

By Diane Casavant

If you are lucky enough to have a layover in Boston, this great city offers three-and-a-half centuries of history, world-class museums, shopping to please any bargain hunter, and food from all over the world — all in walking distance from any part of the city.

You can start by walking the mile-and-a-half Freedom Trail. It is marked in the sidewalk by a red line that winds its way past sixteen of Boston's most historic sites. The walk begins at the Freedom Trail Information Center on the Tremont Street side of Boston Common. Some sites along the Trail include the State House, Old Granary Burial Ground, Old State House, Boston Massacre Site, Faneuil Hall, Paul Revere House, Old North Church, and at the end, the U.S.S.

Constitution. Expect to take all day to complete the walking tour, but you can easily see bits and pieces and catch the "T" back to your hotel.

The "T," short for MBTA (Massachusetts Bay Transit Authority), Boston's subway, is the best bargain in town. For eighty-five cents it can take you anywhere in the city. If you are staying at any of the airport hotels, you can get them to take you to the Airport subway stop which can start you inbound to the city.

If you want to sit back and relax and let someone else do the driving on a guided tour, there are plenty of narrated trolley tours through the city that last about two hours. They run year-round and can be picked

(continued on page 21)

INSIDE...

"L.....I

.....

opens in
Spotlight

Research

"High Five"

ISA PLANNING CALENDAR

NOVEMBER 1998

- 11 ISA Board of Directors Meeting, Boston, MA, USA. All members welcome. Contact any Board Member.

DECEMBER 1998

- 1 ISA News articles due

JANUARY 1999

- 15 ISA News mailing of February Issue
19 2nd Annual ISA Santa Barbara Lunch Fly-In. Contact Karen Kahn, 805-687-5859, e-mail KarenKahn@CompuServe.com or fax 805-687-6226.

FEBRUARY 1999

- 8-11 ISA Ski Days in Keystone, Colorado. Contact Cindy Shonk for details at cindyshonk@compuserve.com, 830-964-3295, 970-468-0626
10 ISA Board of Directors election nominations close
-- ISA Board of Directors Meeting. Contact any Board Member.
15 ISA News articles due

MARCH 1999

- 15 ISA News mailing of April Issue

APRIL 1999

- 1 Captains' Club forms due. See form in centerfold of this newsletter. Contact Patty Barrera
1 Scholarship applications due. Contact Scholarship Chair, Luan Meredith.

MAY 1999

- 1 Scholarship notification of eligibility
11-13 ISA Convention, Business Meeting, and Board of Directors Meeting, Paphos, Cyprus. Contact Convention Chair Liz Voigt.

JUNE 1999

- 1 Scholarship Interviewers assigned to Applicants
1 ISA News articles due
15 Scholarship Applicant interview dates set

JULY 1999

- 15 ISA News mailing of August Issue

AUGUST 1999

- 1 2001 Convention bids due
-- ISA Board of Directors Meeting. Contact any Board Member.

SEPTEMBER 1999

- 1 Scholarship Awards notification
1 ISA News articles due

OCTOBER 1999

- 15 ISA News mailing of November Issue

Next Newsletter Deadline Tuesday, December 1

The International Society of Women Airline Pilots, founded in 1978, has over 570 members from 96 airlines in 36 countries.

ISA welcomes as members women flight crew working for FAA Part 121 airlines or non-U.S. equivalent having at least one aircraft with a gross weight of 90,000 lbs/41,000 kg or more

ISA News is published four times a year in February, April, August, and November. All material in the ISA News is copyright © 1998, ISA and/or the individual authors as noted. Permission to reprint articles for your airline or other organizations can be obtained by contacting the Editor.

The opinions expressed in the articles presented in the ISA News are those of the authors and shall not be construed to represent the policies or opinions of ISA+21. Neither ISA+21, nor the Editor nor the Publisher can accept any responsibility for the correctness or accuracy of the materials printed herein or for any opinions expressed. Opinions of the Editor or contributors do not necessarily represent the position of ISA+21.

ISA

International Society of
Women Airline Pilots

2250 E Tropicana Avenue, Suite 19-395
Las Vegas, NV 89119-6594 USA

BOARD OF DIRECTORS

Ginger Cutter

CHAIRWOMAN OF THE BOARD
ISA NEWS MANAGING EDITOR
ISA WEBMASTER
FIRSTS PROJECT CHAIR
US Airways
650-728-0854
gmcutter@coastside.net

Denise Mowat

VICE-CHAIRWOMAN OF THE BOARD
MEMBERSHIP CHAIR
Northwest Airlines
715-426-5202
70264.2006@compuserve.com

Tiana Daugherty

SECRETARY
United Airlines
925-516-3600
110024.2567@compuserve.com

Janet Coté

TREASURER
United Airlines
925-829-5067
janetcote@compuserve.com

Liz Voigt

CONVENTION CHAIR
Transavia Airlines
Phone/Fax +31-35-695 3442
smythe@euronet.nl

Susan Gillett

CORPORATE COMMUNICATIONS
UPS
Phone/Fax: 315-637-0808
smhgill@ibm.net

Diane Casavant

EDUCATION CHAIR
US Airways Shuttle
617-723-1612
110603.2673@compuserve.com

Patricia León

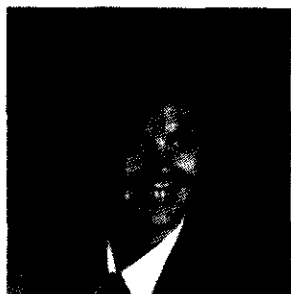
HUMAN PERFORMANCE & RESOURCES
Alaska Airlines
206-285-0936
70772.574@compuserve.com

Luan Meredith

SCHOLARSHIP CHAIR
Air Wisconsin
314-845-7282
76221.2731@compuserve.com

Chair's Letter & ISA News Managing Editor's Report

by Ginger Cutter



As I write my first Chairman's letter, I realize that my first order of business is to solicit members to join the next Board of Directors, term of May 1999 through May 2001. It seems like we just started a new Board, which we did, however the deadline for sending in your bids is February 10, 1999. Our next newsletter may be too late for that deadline.

The current Board of nine has one new mom and three pregnant members on it! We guarantee that it's not catching! We will have five positions open for the next term: Education, Membership, Newsletter, Secretary, and Treasurer. Luckily, Janet Coté has agreed to fulfill one more term as Treasurer. If you are interested in any of the other positions, WE NEED YOU!

For those of you who may not be familiar with the election process, here's how it works. ISA's governing body consists of nine officers: Board Chair, Vice-Chair, Secretary, Treasurer, and five Directors. Each officer chairs one of ISA's standing committees and is elected for a term of two years. The terms are staggered so that each alternating year four or five positions become available. Normally, after the Board members are elected, they then decide among themselves which committee they will run. However, we would like to try something different for this election. We

would like you to run for the committee position that you desire. We don't want someone elected to the Board and then *have* to become the Newsletter Editor when a computer is alien to them! The term is for two years of service on the Board; however jobs may be changed on an annual basis. Your seat on the Board awaits!

So where do you sign? You will find the application form in the centerfold on page C4 which will be used to introduce yourself to the membership. The deadline for returning this application is **February 10, 1999**.

Membership on the Board of Directors is open to all active, inactive, and life members. Your greatest qualification is a sincere desire to serve and the use of a computer! We're confident that you will find, as we have, that your time spent in service to ISA will be a truly rewarding experience.

Perhaps joining the Board will be your "ONE THING" that you do for ISA (remember those inspiring words from last year's Chair, Mary Ana Gilbert?). We already have a wonderful cadre of members who are doing their "ONE THING;" those who gave scholarship interviews, those who worked at the ISA booth during the Winston-Salem airshow in September, those who talked during high school career days, and so many more. Have you made your contribution to the "ONE THING" campaign yet?

Now, I will put on my hat as Managing Newsletter Editor. The August issue was mailed via 3rd class bulk mail on July 18th. However, I have received some reports that it didn't make it to some members' mailboxes. I do apologize, if that is the case. Please let me know. I can get another copy to you first class. Unfortunately, I'm not sure what the problem was as I was not able to do the mailing myself. I was

lucky enough to be giving birth to my gorgeous son, Kennedy at that time! Let's see if this mailing does any better.

Yes, one of the openings for the Board next term will be Newsletter Managing Editor. I thought about continuing, but my family life calls me right now and I have given 4.5 years to the ISA Board (1986-1989, 1997-1999). I'm ready to take a small vacation from ISA work. I will still keep my responsibilities of WebMaster and Firsts Project Chair. The Editor job has been very rewarding. I've learned a new computer program, established outsourcing for the layout of the newsletter, designed a new look for the *ISA News* and enjoyed every minute of it. I would like to find an ISA member who will be just as enthusiastic about this job as I was. It requires a certain ability with a desktop publishing program, and the applicant should be computer savvy. I will be more than happy to train the incoming editor and help in whatever way I can. If someone is interested, I would even like them to help out on the April issue to ease the transition into the new Board.

I know that many of you are thinking that your life is too full now to add another responsibility. I thought that too, but the room

(continued on page 5)



BOARD OF DIRECTORS REPORTS

Membership Report

by Denise Mowat



New members for the quarter total 19, including a new airline, Premiair (Danish), and two returning members, one of whom now flies for Polar Air Cargo, another new carrier for ISA. This brings our membership numbers back up to 575. I am hoping we will surpass 600 by the end of the year.

By the list of names below, it looks as though the membership drive is at full swing at FedEx. Thank-you June Viviano and Keith Johnson and others for your efforts. My appreciation to everyone else who has been spreading the news about ISA to your friends and peers.

Here are our newest members:

Cindee Goes

Southwest B737 FO
DOH 5-28-98

Monica Dawson

Federal Express SO MEM
DOH 12-22-97

Hedvig Grip

Premiair A320 CA Stockholm
DOH 1-19-96

Kimberly Grimes

Federal Express SO MEM
DOH 5-13-98

Michelle Miles

Alaska MD-80 FO SEA
DOH 2-16-88

Lynda Krisko

Airborne Express FO
Wilmington, OH
DOH 9-3-97

Danielle Cassell

United B727 FO DEN
DOH 3-4-96

Nancy Ebert

Federal Express B727 FO MEM
DOH 5-14-96

Adrienne Slais

Alaska MD-80 FO LAX
DOH 4-28-97

Sharon Lea

Federal Express DC-10 CA MEM
DOH 9-78

Renee Bowman

Federal Express, medically retired
DOH 4-17-78

Sharon Ortega

Federal Express A300 FO MEM
DOH 5-15-88

Paula Vail

America West B757 FO PHX
DOH 2-3-98

Kathy Hansen

American B727 SO ORD
DOH 4-27-98

Jolynn Heil

Air Wisconsin Bae146 FO DEN
DOH 3-31-98

Lori Jorgensen

Alaska MD-80 CA SEA
DOH 12-88

Beatrice Wagner-Zimmermann

Condor B757/767 CA
Kelsterbach GERMANY
DOH 9-15-86

Debbie Shavers

United B737 FO LAX
DOH 9-4-95

Bernadette Hayward

Kitty Hawk Air Cargo B727 SO
DOH 7-15-98

Returning members:

Lois Haines

Swissair FO Zurich
DOH 7-2-90

Tammy Barron

Polar Air Cargo B747 FO ANC
DOH 4-7-97

Before I sign off I wanted to let you know I have been having difficulties this summer gaining access to my e-mails and also have had sporadic fax problems. I have been "out of the loop" for a few months trying to fix my problems and am now trying to catch up with my correspondence. It's been quite frustrating and I am sorry for the extended delay in responding to those of you who have written with requests and updates. Stay in touch. ➔

ANNUAL MEMBERSHIP CONTRIBUTION TIME!!

It's time again to renew our annual ISA membership. Contributions are \$45 active/\$15 inactive and are requested to be in by January 1, 1999. Please send your US check or credit card information directly to my home address along with any changes in address, phone number, e-mail, or name etc... Simply use the Membership Application/Renewal form found in the center of this newsletter. Non-US members may renew at the Cyprus convention in May.

For those who haven't mailed their dues to me by mid-November, I will be sending out reminder cards. While you are thinking of it, why not send it in now, that way it will save me a lot of work and ISA some money. A special thanks to those who have already sent in their next year's dues. Remember, dues must be received in a timely manner to ensure your inclusion in the 1999 Membership Roster.

Don't forget. Do it now.

BOARD OF DIRECTORS REPORTS

Human Performance and Resources

by Patricia León



Once again thank you for electing me to this position, and a big thanks to Mary Ana Gilbert for answering all my questions and easing the Chair transition.

Immediately after the convention, I contacted major airlines and updated our pregnancy policy file. Since then, I've received several requests from ISA members to send copies of this file in order to help with their upcoming contract renewals.

Aside from that it has been a quiet quarter. Here is what I have received:

UPGRADES/TRANSITIONS

Jamille Costa (Clements), Atlas Air Captain on B747. Congratulations Jamille on becoming a whale Captain by the age of 30!

Candy Christmas (Reger), transitioned from F/O on the B727 Express One International, to F/O on B737 Air Tran Airways. Good Luck Candy!

WEDDING BELLS

On July 18th, **Lynn Ebert** (NWA) married Max Austin. They reside in Discovery Bay, California. She now goes by Lynn Austin.

On July 4th, **Jamille Clements** (Atlas Air) married Ron Costa and is now Jamille Costa.



Jill L. Pemberton (KLM) was also married and is now Jill L. Graham.

NURSERY NEWS

Ginger and John Cutter (US Airways) welcomed their son, Kennedy Mitchell Cutter, on July 17, at 0116. He was 4 weeks early, but Kennedy was 8lbs. 10oz. and very healthy!

Laura and Mark Argir (US Airways F/O, 757/767) welcomed Lee Jameson on August 12. Lee joins big brothers Ross and Bret.

Tiana and Bill Daugherty (UA CA) are expecting a girl in December.

Janet and Rick Cote (UA) are expecting a girl in early January.

Denise and John Mowat (NW CA) are expecting a baby in April.

OTHER NEWS

Candy Christmas Reger (Air Tran Airways) was divorced and is now Candy Christmas. ➔

"Awaiaulu ke Aloha"

The breeze was warm, the palm trees swayed and the water was a turquoise blue. This was the tropical setting for Lynn (NWA) and Max Austin's Hawaiian Blessing which took place on August 15th at the home of ISA member Eva Akata (NWA) on Oahu. Patricia Barrera and Patty León were among several of the ISA members in attendance. The Hawaiian celebration included a traditional "tea leaf" blessing of their marriage. Their wedding took place on July 18th in CA. The bride was radiant wearing a "Hauku", a flower headpiece. The groom wore a tea leaf lei signifying good luck. Other ISA members present were Kathy O'Brien and Jill Rogers, both NWA.



7-month old Ryan Reeb (son of ISA member Morgan Reeb) enjoys his "twin-engine" airplane and can even hand-prop it!

Chair's Letter

(continued from page 3)

was made and it, in itself, is so fulfilling. Please look into yourselves and find the capacity to serve ISA for two years. I am always available to chat with you about this job. Please call!

NOTE: my new e-mail address is gmcutter@coastside.net

On one last note, as Managing Editor, I gave myself permission to add a personal photograph of myself and Kennedy at 8 weeks. Hope you don't mind! ➔

BOARD OF DIRECTORS REPORTS

BOD Meeting, August 1998, San Francisco, CA USA

Minutes submitted by
Tiana Daugherty



The meeting was called to order at 12:20 by Chairwoman Ginger Cutter. Board members present were Ginger Cutter, Denise Mowat, Tiana Daugherty, Janet Coté, Liz Voigt, Susan Gillett and Diane Casavant. Members attending were Keith Johnson and Patty Barrera.

COMMITTEE REPORTS

SECRETARY: (Tiana Daugherty)
Correction to the Board of Directors meeting minutes in May. Add- "Monies were appropriated for the 1999 Women in Aviation Conference in Orlando, FL." Correction to the 1998 Business meeting minutes. Add-"The Board was asked to review its current policy of appointing the IFALPA representative versus making it an elected position." **MOTION - Accept the minutes from the May Board Meeting as printed in the Newsletter with the addition of the above correction. Passed.**
MOTION - Accept the minutes of the 1998 Business meeting as printed in the Newsletter with the addition of the above correction. Passed.

TREASURER: (Janet Coté)
Presented 2nd Quarter Financial Report. Will begin a review of money management options and fees to be presented to the Board at a later date. Forwarding an updated list of the Board of Directors to the Banks. As the

books are closed on our 1998 Convention and new accounts will be needed for the 1999 Convention in Cyprus, will review the viability of obtaining a corporate credit card. Hopefully it will ease some of the expenses associated with bank transfers and foreign exchange rates.

CONVENTION: (Liz Voigt)
The past two conventions have averaged over 100 members and 250 attendees. Maggie is tying up the loose ends on the financial books. Overall, the critiques were good with very positive feedback on the Thursday seminar. In Cyprus, the Wednesday luncheon will not have a guest speaker. That time will be used for Captains' Club awards and scholarship presentations. The Board agreed to guarantee about 120 rooms. Still working on sponsorship of events, discounts on water sports as well as Cyprus Airways. Due to rising costs of conventions, the Board will be re-evaluating the priorities of where monies should be spent and adjusting the budget accordingly. Voted on the site of our convention in 2000. It will be San Jose, Costa Rica. Will be publishing the guidelines of what is needed for a Board presentation of future convention location hopefuls. Adjusted the convention registration fees and refund policy. **REGISTRATION:** Published rate until May 1. After May 1, an extra \$25 surcharge. Registrants at the convention will incur an additional \$50 fee. **CANCELLATION:** By April 30, a full refund. May 1 - May 20 a 75% refund. Notification by e-mail, fax or letter. After May 20, no refunds available.

CORP. COMMUNICATIONS: (Susan Gillett)
List of officers is being updated with the State of Nevada. Operations Manuals are being updated. Coordinating with Secretary for the IRS review. ISA was asked to prepare an Amicus

brief regarding a lawsuit by a non-ISA member. After conferring with Sylvia Paoli, it was decided that not only being a very political issue, we did not have enough information to become involved. Susan will be sending a letter to the attorney in Denver handling this case explaining our decision. It appears that Ohio St. Univ. is willing to contribute printing costs on our "Tips on Becoming Airline Pilot" brochure. Susan will work with Gail Redden-Jones on needed revisions and coordinate the printing. She will also check into updating the original ISA video.

EDUCATION: (Diane Casavant)
Our exhibit at the 99's Museum is coming along nicely. We have a designer overseeing the work. Scheduled opening is June or July 1999. Hoping on a good turn-out when this exhibit opens.

MEMBERSHIP: (Denise Mowat)
Automatic renewal of memberships tabled until August '99. Approximately 571 members. Membership applications are currently being revised and reprinted shortly. The application can soon be found on our website. Discussed lifetime vs. charter membership definition and the feasibility of paying a one-time lifetime membership fee, as well as associate memberships. Both discussions tabled pending further review. Considering adding a fee on late membership renewals, to cover some of the added costs incurred with reminders sent to those members. Reminder to all members - Leaves due to pregnancy do not qualify a member for 'inactive' status with regards to ISA dues.

NEWSLETTER: (Ginger Cutter)
The August newsletter went above budget due to the additional pages, postcard ballot insert and upgraded paper stock used for the picture pages. Plan on the

(Continued on page 7)

BOARD OF DIRECTORS REPORTS

BOD Minutes

(Continued from page 6)

November newsletter to be under budget to help offset. The feature article on finance seems to have been well received. Next May will review 1st class vs. 3rd class mailing - it's associated costs vs. time. Advertising may need to change from 'rate' to 'donation' to assist with tax issues. Preferred method of receiving articles for the newsletter is straight e-mail.

FINANCIAL SCHOLARSHIP:

(Luan Meredith)

Committee will be meeting by the end of the month to select the financial scholarship winners.

AIRLINE SCHOLARSHIP:

(Keith Johnson)

The committee has completed its selection and the winners have been notified. A list of the successful applicants will be posted on our website. The scholarship guidelines and rules will also be added to our website. Discussed Northwest Airlines requiring scholarship applicants go through an initial phase of testing at their facility before being considered for the type rating. Will follow-up with Northwest on our concerns and report back to the Board. **MOTION - Move to fund up to \$300 for promotional give-aways at the ISA + 21 booth at the Winston-Salem Air Show, September 12th and 13th. ISA will be reimbursed from the air show proceeds with the balance going into the scholarship account. Passed.** Mary Ana Gilbert has agreed to be the local liaison

Welcome to Dr. Jacqueline Boyd

As per Article V, iii), Dr. Boyd has been accepted as an Honorary Member of ISA. We believe that she will be a wonderful asset to our organization. Thanks to all members who voted.

for the WIA Conference. We are still seeking a volunteer to coordinate this event. **MOTION - Appropriate up to \$1500 for the 1999 Women in Aviation Conference to be used for the booth, promotional give-aways and related expenses. Any additional funds by Board approval only. Passed.**

STANDING COMMITTEES

IFALPA: (Liz Voigt)

Human Performance Committee meeting report is available for review. The Committee on Human Performance and the Woman Pilot has been quiet for the past two years. The European pilot community is fighting CRM assessment during check flights, feeling this is a very subjective area to judge (a reality for many in the United States already). There will be an aviation medical seminar in Karachi, Pakistan before the next IFALPA meeting if anyone is interested in attending.

FIRSTS: (Ginger Cutter)

New information from Turkey regarding their first female pilots.

CAPTAINS' CLUB: (Patty Barrera)

Waiting for a complete updated list from Lisa Kuehl. Reviewing options on the plaques awarded. During the presentation at the next convention, everyone will be asked to hold their applause until the end and Patty will make sure a designated photographer is on hand to capture everyone's moment.

WEBSITE. (Ginger Cutter)

The number of hits on our pages from around the world continues to rise.

OLD BUSINESS

Beryl Markham Memorial - It will be a free-standing statue. We have been asked to use our name as an endorsement for them to seek donations. Susan Gillett will follow-up trying to find out who exactly is spearheading this project, how much money they are

trying to raise, what the funds are being used for, who will maintain the monument, etc. and report back to the Board.

IFALPA Representative - After review, it was determined that the only elected positions are the Board of Directors. All committee chairs are appointed by the Board. The IFALPA representative needs to be a caring diplomat, as the position carries a fair degree of sensitivity. It will remain as an appointed committee.

Service pins - Maggie Rose headed up the effort to recognize all those who have served this organization since its inception to date with beautiful gold wings. The responsibility of maintaining this award now lies with the Vice-Chair.

NEW BUSINESS

Next meeting is tentatively set for Wednesday, November 11th in Boston, Massachusetts at a time and location to be announced.

ADJOURNMENT

Meeting adjourned at 18:00. →

Corporate Communications Report

by Susan Gillett



As the new Corporate Communications Chair I have been busy reviewing the existing corporate documents and files to determine what records need to be retained and which documents may need to be updated. My

(Continued on page 8)

BOARD OF DIRECTORS REPORTS

Corporate Communications

(Continued from page 7)

predecessor, Nancy Novaes, has put together a very thorough rough draft of an Operations Manual which the Board is reviewing. This will help future new board members get a quick grasp of what needs to be done in each position. My thanks to Nancy for completing this project.

I am in the process of updating the list of board members on file with the state of Nevada, our state of incorporation. I am also working with Treasurer Janet Côté, to get ready for the Internal Revenue Service's final review of our Section 501(c)(3) tax-exempt status. We will work with outside counselor Sylvia Paoli, on this.

We have an offer from Ohio State University to help fund further publication of the booklet *"Tips On Becoming an Airline Pilot,"* and I will be working with Mary Ana Gilbert to coordinate this.

One of my biggest tasks is to help the Convention Chair find some additional funding from airlines to help defray the cost of some of the convention events. In the past our donations have come primarily from U.S. airlines. I would like to try to get donations from carriers in Europe, Africa and Asia. I am asking all of you who fly for non-U.S. carriers to suggest names of officers at your airline that I can contact. I would like to get letters out to them by the end of the year. It would be helpful to have a name, the person's official title, business address, telephone and fax numbers, and any e-mail address.

I would also appreciate it if some of you would volunteer to act as local liaisons with whomever we contact. You can send this information to me at my home address at the front of the newsletter, or fax it to me at 315-637-0808 (add the U.S. country code if dialing from overseas).

My phone number is 315-637-0500. My new e-mail address is: smhgill@ibm.net. You can also pass this information to Convention Chair Liz Voigt at fax 31-35-695-3442 or e-mail smythe@euronet.nl.

On the scholarship front I will be working with Keith Johnson to try and get future airline scholarships from Delta, Southwest, and Alaska Airlines. We are also interested in soliciting such scholarships from non-U.S. carriers. If you know an official we can contact about this at your airline, please send his or her name and address to me or Keith.

We were contacted recently by people in Canada who were soliciting help with a memorial to pilot Beryl Markham, the first woman to fly solo from east to west across the Atlantic. I am trying to get more information about this project to enable the Board to decide whether we want to make a donation. ➔

Education Report

by Diane Casavant



Once again another school year is upon us and thousands of potential young aviators are awaiting a visit from you! I encourage each and every one of you to do just one thing this year for ISA. Call a school in your neighborhood and volunteer to speak to students about exciting careers in aviation. Ask if they

have a Career Day which many do and donate a morning or afternoon of your time.

I would recommend fifth grade and up and the career-minded high schoolers getting the most benefits. Bringing airline snacks to the lower grades is always a big hit and a video about aviation to the higher grades would be very educational. Wearing your uniform and telling your inspiring story of how you became an airline pilot will grab all of their attention. They will have endless questions and will be quite impressed.

The school administrator or principal are your best contacts and they can inform you of their school programs for the year. If a Career Day is not scheduled you

can suggest visiting several grades in an auditorium or their individual classes.

Last school year I coordinated a visit through a teacher I knew and spoke to her fifth and sixth graders in the school cafeteria. After passing out snacks, showing a video and answering many questions for about 45 minutes, I went up to each class for another half hour. I knew they appreciated my visit very much as a week or so later they each sent me very creatively made thank-you's.

This is a feel-good experience. Do it! I have the tapes you need and would enjoy hearing about your visit. Just call or e-mail me anytime. Remember, do just one thing for ISA. And just think, you

(Continued on page 9)

BOARD OF DIRECTORS REPORTS

Education Report

(Continued from page 8)

might be the one who inspires a future pilot. We were all initially inspired by someone. What an honor!

Next July the 99s will have the grand opening of The 99s Museum of Women Pilots at their headquarters in Oklahoma City.

It all started back in 1988 when a two-story building at their headquarters was completed, but the second floor, designed for a museum and library, was left as a shell to be finished at a later date.

Presently, the first floor houses our

exhibit along with many others. Our cabinet was completed back in January, 1993, by ISA Member Lori Cline. It displays many photos and uniforms of our ISA members.

Then in September, 1996, the 99s decided to finish off the second floor and organize a fund-raiser to start their project. Their mission for the museum is to preserve the unique history that depicts women in aviation from balloonist to astronauts from the 19th to the 21st centuries. So the 99s came to ISA to seek sponsorship and to purchase a museum cabinet for \$1500 that we decided to do. To date, they have raised more than \$210,000 and are nearly complete. C.J. Strawn, a 99

Chapter Chairwoman, movie production set designer and student of museum interior design, donated her time and talent to the design and construction of the museum. She is also helping us with our cabinet.

C.J. Strawn has been keeping me posted on their progress through construction. Recently, I have received photos of the near-complete second floor that looks quite impressive with beautiful trimmed oak cabinets and built-in wood shelving all meticulously arranged.

We are definitely in good hands. This finished project will be well worth a visit next year. ➔

Financial Scholarship Report

by Luan Meredith



I am very proud to say that **Gail Redden-Jones**, a pregnant **Denise Mowat** and myself acted as the scholarship selection committee and were able to unanimously select the following very deserving ladies as our 1998 scholarship recipients:



KRISTINE GENTRY started flying lessons in high school using her babysitting money. Currently she works as a

flight instructor and contract pilot. Kristine will receive an *ISA Career Scholarship* for her ATP. Congratulations Kristine!



NANCY IMAMURA, a single mom of three beautiful daughters, will receive our *Holly Mullins Memorial*

Scholarship for her MEI. Nancy currently works as a CFI/traffic watch pilot and UAL Customer Service Representative. Congratulations Nancy!



LAURA SMITH's hobby of flying turned into a passion for an airline pilot career. She is now a flight officer on a Beech 1900. She will receive our *ISA Career Scholarship* for her ATP. Congratulations Laura!



PATRICE GAPEN decided to be a pilot at 8 years old! Today she works as search and

rescue, transport, mission, and check pilot for the Civil Air Patrol as well as a CFI. She is the recipient of our *Fiorenza de Bernardi Merit Scholarship* for her MEI. Congratulations Patrice!



NEELEY WEAVER got interested in flying when her parents required her to drive her younger

brother to the airport to take flying lessons. The weather was too bad to fly so she got involved in a conversation with his female flight instructor...the fire was lit! Today, Neeley works as a CFI and ground

(continued on page 10)

Financial Scholarship Report

(continued from page 9)

instructor for the University of Illinois. She will receive the ISA Career Scholarship for her ATP.

These awards totaled \$9982.00! To me, this is the heart of ISA. I feel so proud of each of us because in order for these ladies to take the next step in the pursuit of their dream of becoming an airline pilot, a long list of events had to occur. Many of those events were the "ONE THING FOR ISA" that individual members volunteered to do!

I would like to thank each of the following ladies for taking time out of their busy schedules to conduct personal one-on-one scholarship interviews for ISA:

Ellen Carlock, Jennifer Palmer, Angie Smith, Lisa Root, Maria Eberle, C.A. Prewitt, Susan Arthurs, Ann Aldrich, Sherry Harriman, Amy Bond, Nancy Novaes, Patricia León, Stephanie Wallach, Cathy Haar, Jan Anderson, Tiana Daugherty, Patricia Barrera

Each of you did an outstanding job!

I could not end this report to you without special recognition of **Elise Pistor** for the extraordinary success of our auction at the recent convention. The Scholarship Chair gives an ovation to you Elise! We also applaud UPS and NW for their generous contributions to the ISA Scholarship Fund. ➔

When sending in your membership contribution, don't forget to donate to our Scholarship Fund.

Airline Scholarship Report

By Keith Johnson



We have had many accomplishments to celebrate recently. The winner of the United Air Lines type rating for 1997, **Jennifer Neal**, completed her training on August 22 and received a type rating on the B-737-300. **Karen Bland**, the ISA liaison for United, held a congratulatory party at her home for Jennifer on the following day. **Tricia Jimenez**, was supposed to start her training at United on August 30, but had the good fortune to be hired by American Airlines. **Kimberly Guilfoyle**, the 1997 UAL runner-up, will take her place. She is scheduled to start her training on September 25. Starting on the same day at Federal Express will be **Kimberly Grennan**, to earn her Flight Engineer rating. **Vicky Doyle**, a 1996 scholarship winner, began her 737-300 training at United on August 18. There is lots of training going on right now!

While our previous scholarship winners were busy taking advantage of their training opportunities, the Airline Selection committee was hard at work selecting the new scholarship winners for 1998. **Lisa Ash, Krisan Wismer** and myself met on August 17 and 18 to read through 28 Airline Scholarship applications and try to narrow it down to 5 winners and their runners-up. We decided to select two runners-up for each scholarship this year, because of the current heavy

volume of hiring at the major airlines. This gives us an opportunity to honor 15 of the applicants, instead of just 10. The photos of this year's winners appears on pages 11-12 with a short biography of their accomplishments.

I would really like to commend Lisa and Krisan for the long hours they put into reading through 28 applications and all of the Interview Assessment sheets. It was a big job and required quite a bit of time and perseverance to sort through such an enormous amount of information. My thanks to both of you!

Here are the winners and runners-up for the 1998 ISA Airline Scholarships:

United Airlines - Type rating # 1
Winner: **Karen Smith**

1st Runner-up: Martha Burgoon
2nd Runner-up: Lori Anderson

United Airlines - Type rating #2
Winner: **Kathryn Smith**

1st Runner-up: Alison Devereux-Naumann
2nd Runner-up: Mary Berner

Northwest Airlines - Type rating
Winner: **Karen Anderson**

1st Runner-up: Bernadette Hayward
2nd Runner-up: Stephanie Guiang

US Airways - Type rating
Winner: **Christine Condon**

1st Runner-up: Lynn Zapico
2nd Runner-up: Kelly Brown

Federal Express - FE rating
Winner: **Melany Dennis**

1st Runner-up: Natha Robertson
2nd Runner-up: Michelle Turner

Congratulations to all of these applicants! Their applications reflected a great deal of hard work in attaining their current experience, as well as the time they took to prepare their scholarship

(continued on page 11)

Airline Scholarship Report

(continued from page 10)

applications. To those of you who interviewed these applicants, you know the sacrifices these candidates have experienced to reach their current status. To those of you who have never interviewed a scholarship applicant before, I would highly recommend it in the future. It gives you a great appreciation for the difficulties encountered by those who are trying to follow in our footsteps, and it also gives the applicants a wonderful opportunity to meet and talk with someone whom they aspire to follow!

We tried to have two ISA members interview each applicant. The Interview Assessment sheets that were submitted for each applicant were extremely helpful in assisting the Selection Committee to choose the scholarship winners. Simply looking at a written application never paints the picture of an applicant as well as a personal interview can. The written comments about the applicants were very incisive and comprehensive which made our selection task much easier to complete. We are very grateful to all the ISA interviewers who gave their time to talk with each of the applicants, some of them more than once!

My Special Thanks go to **Anne Aldrich, Susan Arthurs, Donna Beering, Jennifer Nicholson and Nancy Novaes** for completing two interviews! Our BOD members did quite well. **Diane Casavant, Ginger Cutter and Susan Gillett** interviewed three of the applicants who won awards. Our interviewers included some of our newest members, as well as some of our long-standing members. We had a good mix of interviewers. The most important aspect of the

interview is the appreciation that many of the applicants expressed for the value of the interview itself, even if they were not awarded a scholarship. It is a very valuable experience that helps them to discover the source of their strengths and weaknesses, in preparation for future airline interviews. They really appreciated the critiques they were offered by the interviewers for future reference

Many, many thanks to the rest of the Airline Scholarship interviewers: **Jan Anderson, Cami Atwood, Patty Barrera, Cyndhi Berwyn, Eva Brock, Ellen Carlock, Carole Danis-Litton, Tiana Daugherty, Margie Freeman, Kathy Garske, Cathy Haar, Pat Kessler, Julie Kohler, Lisa Kuehl, Sherie Laurie, Sharon Lea, Heather Loomis, Pam Mahonchak, Kathleen Malone, Pati Marsh, Catherine Moore, Denise Mowat, Sue Nielsen, Lynn O'Donnell, Cheryl Olivier, Johnnie Olson, Sylvia Otypka, Stephanie Padden, Carolyn Pasqualino, Janet Patton, Dolores Pavletic, Amy Petersen, Penny Price, Gretchen Quasebarth, Christine Redfern, Lisa Root, Charlene Sammis, Angie Smith, Sandra Stephens, Megan Streeter, Valerie Thal-Slocum, Carol Timmons, Connie Tobias and Deb Ziebart.**

It was very gratifying to read the note that **Charlene Sammis** included with her Interview Assessment sheet. Charlene was one of the founders of the original ISA Scholarship program over 10 years ago.

"It has been about ten years since I helped interview prospective candidates. I had forgotten the pleasure I received from it. This time was no exception. I received more than I gave. It was truly a

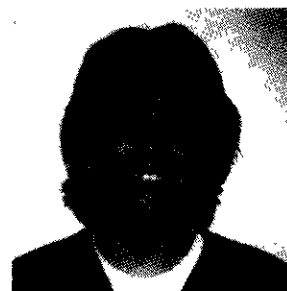
pleasure to see such enthusiasm and confidence from the applicant. It helped to bring me back to why I am an airline pilot. Sometimes we tend to lose sight of that. I can't imagine the time all of you must have spent to bring this Scholarship program to this high level of professionalism. I am proud of all of you."

Thank you, Charlene, for getting the ball rolling. And thanks to all of you for keeping up the momentum!! ➔

Airline Scholarship Winners:



Karen Anderson - Northwest type rating. Karen has flown over 4200 hours and is currently a Beech 1900 Captain for US Airways Express. She lives in Morrisonville, NY and is a graduate of the University of North Dakota, B.S. - Aeronautical Studies.



Christine Condon - US Airways type rating. Christine recently completed her transition to Saab

(continued on page 12)

BOARD OF DIRECTORS REPORTS

(continued from page 11)

340 captain from the Jetstream 3100 left seat for Northwest AirlinK based in Memphis, TN. She has flown for them for over three years and earned her B.S. degree from the University of Massachusetts.



Melany Dennis - Federal Express Flight Engineer rating. Melany is a Saab 340 First Officer flying for Northwest AirlinK for the past 2 years. She has accumulated over 1200 hours and earned her B.A. degree from the University of Illinois.



Kathryn Smith - United Airlines type rating #2. "Katie" recently upgraded to Beech 1900 captain for Mesa Airlines after relocating from Redmond, OR. She earned her B.S. degree from Metropolitan State College in Denver and has flown over 3700 hours. ➔



Karen Smith - United Airlines type rating #1. Karen recently started DHC-8 training as a new captain for Shuttle America in Hartford, CT. She graduated Cum Laude from Massachusetts Bay College and has flown over 3100 hours.



1997 ISA Scholarship winner, Jennifer Neal with her new temporary Boeing 737 type rating!

Convention Report

by Liz Voigt



It was great to get together with the new Board last month in San Francisco. We had a very productive meeting but missed Patty León and Luan Meredith who were unfortunately unable to attend - I hope to see them in Boston in November at our next meeting. As far as convention issues are concerned several decisions were made. First of all

the site of the 2000 convention will be San Jose, Costa Rica. Thanks go to member Helena Andreis for putting a great package together. Although we had some inquiries from members who were thinking of putting Denver forward as an option they did not manage to put together a proposal in time for the meeting. Hopefully they will still do so for the following year. I am preparing a Convention Proposal Information Sheet to help members who would like to propose their city as a convention site gather relevant information for the Board. Hosting a convention is quite a large undertaking (as any past hosts will tell you) but it is also enormously rewarding when you see fellow ISA members and their families enjoying what your city has to offer. We need convention site proposals for cities in North

America for the 2001 convention. Closing date for the bids is August 1, 1999. Please contact me (preferably by e-mail on smythe@euronet.nl) if you want any other information or for a copy of the Information Sheet (which I also hope to include in the February newsletter). I would love to have several proposals to present to the Board next August but I need you guys to make it happen. As we now plan our conventions two years in advance the Board decided to allow convention proposers to move the date if necessary - the traditional date was originally chosen so that members would know when to bid their vacation.

On a similar theme - do you think you have what it takes to be ISA's

(continued of page 13)

ISA COMMITTEES AND RESOURCES

International Society of Women Airline Pilots, 2250 E. Tropicana Ave, Suite 19-395, Las Vegas, NV 89119 USA

Aeromedical / Loss of License

Carole Litten, Chairwomen
941-437-9750
70774.1354@compuserve.com
Susie Arthurs, 816-747-2516
sarthurs@socket.net
Ginger Cutter, 650-728-0854
gmcutter@coastside.net
Sherry Harriman, 303-777-6882

Captains' Club

Recognition of Captain Upgrade
Patty Barrera
34 Daisyfield Drive
Livermore, CA 94550 USA
925-606-7506
JPJBarrera@compuserve.com

Convention

Liz Voigt
smythe@euronet.nl
Phone/Fax: +31-35-695 3442

Convention Liaison - 1999

Natasa Papadopolou
11, Karditsis Street
Nicosia - 173, CYPRUS
357-2-477137

Corporate Communications

Susan Gillett
Ph & Fax. 315-637-0808
smhgill@ibm.net

Education

Diane Casavant
617-723-1612
110603.2673@compuserve.com

Fast Track

News for ISA Job Seekers

Luan Meredith
545 Blossomheath Drive
St. Louis, MO 63125 USA
314-845-7282
76221.2731@compuserve.com

FIRSTS Project

Ginger Cutter
650-728-0854
gmcutter@coastside.net

Gender Issues

Nancy Novaes, 212-535-9865
76147.514@compuserve.com
Lucy Young, 404-892-2607
70774.1474@compuserve.com

Human Performance & Resources

Family News?

Patricia León
563 1/2 Highland Drive
Seattle, WA 98109 USA
206-285-0936
70772.574@compuserve.com

IFALPA Representative

Liz Voigt
smythe@euronet.nl
Phone/Fax: +31-35-695-3442

International Fund

Donna Beering
618 Maplewood Drive
Wheaton, IL 60187 USA
630-665-1027
76637.676@compuserve.com

ISA Peer Support Team

CIRP-Trained Specialists

Eva Brock, 916-753-4612
72753.305@compuserve.com
Karen Kahn, 805-687-5859
KarenKahn@compuserve.com
Pam Krueger, 703-330-7178
Nancy Novaes, 212-535-9865
76147.514@compuserve.com
skyelement@usa.net
Charlene Sammis, 305-852-0193
2char@reefnet.com
Mimi Tompkins, 808-988-7102
MLTompkins@compuserve.com
June Viviano, 901-854-9382
waldotoo@aol.com
Linda Wright, 281-362-0748
76147.2434@compuserve.com
Lucy Young, 404-892-2607
70774.1474@compuserve.com

ISA Graphics

Lisa Kuehl
515-432-6019, Fax 515-432-2860
73761.2674@compuserve.com

ISA Store

Carol Cansdale, Manager
6281 Mallory Lane
Eden Prairie, MN 55346 USA
612-906-2833
70263.67@compuserve.com

Library

Denise Mowat
W12347 848th Ave
River Falls, WI 54022 USA
715-426-5202; FAX 715-426-0995
70264.2006@compuserve.com

Membership

Change of Address?

Denise Mowat
W12347 848th Ave
River Falls, WI 54022 USA
715-426-5202, Fax 715-426-0995
70264.2006@compuserve.com

Menopause Medical Resources

Beth Raphael, 650-994-8019
76250.1227@compuserve.com
Nancy Novaes, 212-535-9865
76147.514@compuserve.com

Newsletter

Ginger Cutter, Managing Editor
191 Bridgeport Drive
Half Moon Bay, CA 94019 USA
650-728-0854; Fax 650-728-8502
gmcutter@coastside.net

Operations Manual

Nancy Novaes
212-535-9865; FAX 212-734-5751
76147.514@compuserve.com
skyelement@usa.net

Scholarships - Financial

Luan Meredith, Chairwoman
545 Blossomheath Drive
St. Louis, MO 63125-5323 USA
314-845-7282
76221.2731@compuserve.com

Scholarships - Airline

Keith Johnson
P.O. Box 421
Nesbit, MS 38651 USA
601-429-7972; Fax 601-429-7282
71145.550@compuserve.com

Scrapbook Archives

Send articles and pictures!

Norah O'Neill (1996 only)
1351 Hillcrest Drive #306
Anchorage, AK 99503
907-276-8849
Ginger Cutter (1997 and later)
191 Bridgeport Drive
Half Moon Bay, CA 94019
650-728-0854

Secretary

Tiana Daugherty
1001 St. Andrews Drive
Byron, CA 94514-9226 USA
925-516-3600
110024.2567@compuserve.com

Treasurer

Scholarship Donations

ISA Taxpayer ID #52-1465669

Janet Coté
2458 Wildhorse Drive
San Ramon, CA 94583 USA
Phone/Fax 925-829-5067
janetcote@compuserve.com

Website

www.iswap.org
Ginger Cutter, Webmaster
650-728-0854; Fax 650-728-8502
gmcutter@coastside.net

This ISA News centerfold is for the use of ISA members only

To protect members' personal data, please remove this centerfold before sharing the ISA News with others

November 1998 Roster Update

NEW MEMBERS

Renee Bowman
3359 Morning View Drive
Oceanside, CA 92-54
760-967-0111
hotshot737@aol.com

Danielle A. Cassell
P.O. Box 4786
Aspen, CO 81612
970-927-5318

Monica Dawson
463 Tibet Rd.
Columbus, OH 43202

Nancy K.Ebert
13589 67th Pl. N.
Maple Grove, MN 55311
612-519-0895
fax 612-553-9725

Cindee Goes
47 Horizon Dr
Boise, ID 83702
208-344-1919
cindee@cyberhighway.net

Kimberly Grimes
1014 Westview Terrace
Dover, DE 19904
302-678-8925
grimes@inet.net

Hedvig Grip
Norrskogen 2875
S-76294 Rimbo
SWEDEN
(46) 851294055

Kathy Hansen
63835 E. Canyonside Ct.
Tucson, AZ 85739
520-825-0499

Bernadette Hayward
1172 Tanglewood Way
San Mateo, CA 94403
650-578-8944

Jolynn Hei
P.O. Box 1666
Silverthorne, CO 80498
970-262-5984

Lori A. Jorgensen
3082 E. Rivernest Dr.
Boise, ID 83706
208-343-0290
70354.164@compuserve.com

Lynda J. Krisko
25 Devore Avenue
Hampton, VA 23666
757-827-5209
Taylor3026@aol.com

Sharon Lea
8039 Breezy Creek Rd.
Germantown, TN 38138
901-737-4100

Michelle O. Miles
11035 220th Pl. NE
Redmond, WA 98053
425-836-2638

Sharon Ortega
124 South Humes Rd.
Memphis, TN 38111
901-324-4192
sortega107@aol.com
Debbie Shavers
1114 Neal Pickett Dr.
College Station, TX 77840-2611
409-696-8601
74137.1434@compuserve.com

Adrienne Slais
134-F Paseo de la Concha
Redondo Beach, CA 90277
310-373-3861
ASlais@aol.com &
70772.551@compuserve.com

Paula S. Vail
1808 W. Verde Lane
Phoenix, AZ 85015
602-254-5798
fax 602-254-1266
tvail@sprynet.com

Beatrice Wagner-
Zimmermann
Von-Stauffenberg-Str.14
55268 Nieder-Olm
GERMANY
06136-5789 & fax

MEMBERSHIP CHANGES

Tammy Barron
P.O. Box 11061
Anchorage, AK 99511-1061
907-227-0399

Louise Gilroy
7 Seabury View
Malahide, Co. Dublin
IRELAND
+353-1-8452971 & fax
lgilroy@indigo.ie

Jill Graham
(formerly Pemberton)
Slotlaan 10
1829 BC Oudorp
NETHERLANDS
31-72-515-8232 ph & fax

Lois Haines
Egetswilerstrasse 12A
8185 Ruti-Winkel
SWITZERLAND
+41 (01) 861-1867

Faith Hillman
20707 Great Laurel Ct.
Kingwood, TX 77346
281-812-2365

Beth Janssen
2655 Evergreen Rd.
Colorado Springs, CO 80921
719-481-0520
fax 719-481-0550
beth_paul@csi.com

Gloria La Roche
2315 Ash Lane
Northbrook, IL 60062
847-412-1030

Carole Litten
clitten@ibm.net and
70774.1354@compuserve.com

Wendy Paver
30215 Fiddler's Green
Farmington Hills, MI
48334-4717

Glenys Robison
49 Fishleigh Drive
Toronto, Ontario M1N 1H3
CANADA
416-269-9910

Nina Rope
airline- Finnair
phone- 358-9-4522182

Camilla Sommar-Rale
Viertotie 11 B
01390 Vantaa
FINLAND
358-9-8274 864

Lucy Tardrew
18 Ashdown Chase
Nutley, East Sussex TN22 3LY
ENGLAND
01825-713484
fax 01825-713228
hedley.tardrew@virgin.net
mobile ph# 0973 747400

Insert this roster update in your membership directory

This ISA News centerfold is for the use of ISA members only

To protect members' personal data, please remove this centerfold before sharing the ISA News with others

Moving?...Change of Address/Phone/E-mail?

Please let us know right away so we'll know where
to send your next newsletter!

Name _____ E-mail _____

Address _____

City, State, Zip, Country _____

Phone _____ Fax _____

Send to: Denise Mowat, W12347 848th Ave., River Falls, WI 54022 USA Fax: (715) 426-0995; e-mail: 70264.2006@compuserve.com

Family News? Any special news to tell us about? New baby? Upgrade? New Spouse/Partner? New Aircraft Type? New Airline? Special Achievements?

Name _____ Phone _____ E-mail _____

(include both family and married names)

Address/City/State/Zip/Country _____

Airline _____ Position _____ Equipment _____ Country _____

New News _____

(continue on separate sheet of paper as required)

Send to: Patricia León, 563 1/2 Highland Drive, Seattle, WA 98109 USA e-mail: 70772.574@compuserve.com

CALLING ALL CAPTAINS!! For inclusion in the ISA+21 Captains' Club

Name _____ E-mail _____

Address _____

City, State, Zip, Country _____

Airline _____

Date First Signed Release* _____ Aircraft Type _____

(*After Initial Operating Experience, OK to solo, or whatever your company may call it)

Send to: Patty Barrera, 34 Daisyfield Drive, Livermore, CA 94550 USA (510) 606-7506 e-mail: JPBarrera@compuserve.com

ISA News Article Submission Information

All members are encouraged to submit articles for the newsletter. The deadline for each issue is 30 days (35 days for non-electronic submissions) prior to the mailing date. Articles that are not time-sensitive may be held for future issues.

PLEASE SUBMIT YOUR ARTICLE IN ELECTRONIC FORMAT IF AT ALL POSSIBLE. A simple text file (.txt) or Rich Text Format (.rtf) is preferred, however you may send in Word (Mac or Windows), WordPerfect (Mac or Windows), Claris Works (Mac or Windows) AmiPro (Windows), Windows Write. PLEASE, PLEASE indicate which format your file is saved in.

If the article is small enough, you may also just send it as e-mail.

Submit your article by one of the following methods, in order of preference:

1) File transfer or email to: Ginger Cutter, gmcutter@aol.com or gmcutter@compuserve.com

2) Mail IBM or Mac 3.5" disc to Editor, 191 Bridgeport Drive, Half Moon Bay, CA, 94019 USA

3) Fax to 650-728-8502

4) Mail typed articles to above address

Unless written instructions to the contrary are received by ISA from the author, all submissions become the property of ISA and may be reproduced and disseminated at the sole discretion of ISA.

Photographs may be mailed to the Editor, they MAY be trimmed for spacing. Please identify the people and event on the back of each photo. After publication, photos will be forwarded to the Scrapbook Chair unless your request for return is noted on the back of the photo

This ISA News centerfold is for the use of ISA members only

To protect members' personal data, please remove this centerfold before sharing the ISA News with others

C-3

ISA+21 - APPLICATION TO RUN FOR BOARD OF DIRECTORS

TERM: May 1999 - May 2001

Name _____

Airline _____ Position _____

Address: _____

City/State _____

Zip/Country _____

E-mail _____ Phone _____

Fax _____

Write a brief biography about yourself. Include a statement describing why you would like to be a Board member and the committee(s) you are interested in.

Please attach a head and shoulders photograph of yourself to be published along with your biography in the April newsletter. Your signature on this application declares your willingness and eligibility to serve on the Board of Directors of ISA+21 from May 1999 to May 2001. Thank you for your interest!

Signature _____

Date _____

Please mail your completed application to:

Tiana Daugherty
1001 St. Andrews Drive
Byron, CA 94514-9226 USA
e-mail: 110024.2567@compuserve.com

APPLICATION DEADLINE: February 10, 1999

ISA Store Order Form

Name _____ Phone _____

Date _____

Address, City, State, Zip, Country _____

Please send me the following ISA items

	Price	Quantity	Color/Size	Shipping	Total
ISA Lapel Pin (gold logo on black background)	\$4.00	_____		\$2.00	\$ _____
ISA Notecards and Envelopes	\$5.00/15	_____		\$2.00	\$ _____
ISA Thermal Travelers Mug	\$10.00	_____		\$3.00	\$ _____
ISA Luggage Tags	\$3.00	_____		\$.50	\$ _____
ISA Highlighter Pen (gold logo on black pen w/ yellow highlighter)	\$2.00	_____		\$1.00	\$ _____
ISA Decals (blue and gray on glossy white, 2.5")	\$1.00/ea.	_____		none	\$ _____

ISA Clothing

ISA 20th Anniversary T-Shirt (L or XL)	\$10.00	_____		\$3.00	\$ _____
ISA Logo Polo Shirt (white or navy in S, M, L or XL)	\$27.00	_____		\$3.00	\$ _____
ISA T-Shirt (white with gray logo only in L or XL)	\$15.00	_____		\$2.50	\$ _____

The following shirts are of limited quantity and subject to availability. Please call or e-mail prior to ordering:

Bangkok '95 Women's short sleeve	\$8.00	_____		\$2.50	\$ _____
Vancouver '94 Women's short sleeve	\$6.00	_____		\$2.50	\$ _____
'94 HALP long sleeve mock turtleneck	\$8.00	_____		\$2.50	\$ _____
'94 Women's long sleeve	\$8.00	_____		\$2.50	\$ _____
Career Information Booklet: "Tips on Becoming an Airline Pilot"	\$1.00	_____		\$.50	\$ _____

TOTAL \$ _____

Please make checks payable to "ISA" and send to:
Carol Cansdale, 6281 Mallory Lane, Eden Prairie, MN 55346-1424 USA

This ISA News centerfold is for the use of ISA members only

To protect members' personal data, please remove this centerfold before sharing the ISA News with others

Convention Report

(continued from page 12)

next Convention Chairperson? I have to leave the Board after the Costa Rica convention and would like - if at all possible - to offer the next Convention Chair the chance to shadow me during the preparations for that convention which will begin in earnest in the second half of next year. ISA's annual conventions seem to have now stabilized at approximately 250 attendees which requires a reasonable amount of forward planning, a head for details, stress-resistance and, of course, - enthusiasm! If you feel this might be your calling drop me a line! Having a convention you planned all come together gives you a great sense of achievement as well as a chance to interact with many more ISA members than you normally would. I won't tell you that it's not hard work - that it is - but the result is definitely worth it.

On now to 1999 and CYPRUS! In July, I went on a three-day visit to Cyprus. Our 1999 Local Liaison Natasa Papadopolou was a great hostess, and we covered a lot of ground in a short time. We carried out a full inspection tour of Coral Beach Hotel and Resort and met with several of the department managers who will be working with us in the next year. This five-star resort was opened a mere five years ago on one of the best beaches in the Paphos area. Cyprus lies in the eastern Mediterranean only 65 miles west of Syria. It is famous as the birthplace of Aphrodite (known as Venus by the Romans) - the Greek goddess of love. In fact you will pass the rocks where she is said to have risen from the water on your way from Larnaca airport to Paphos! In slightly more recent times the island was ruled by Alexander the Great, captured by the Romans

under Julius Caesar and then given by Anthony to Cleopatra!

The actual convention dates for 1999 are the 11th, 12th and 13th of May. We are putting together various side trips - a Greek island cruise for 5-7 days before the convention and a post convention trip to the Holy Land (Israel and Egypt). Full details will be in the January newsletter, but as usual I would strongly advise you to start planning early - that's half the fun anyway! We will also have ideas about places to visit in Cyprus for those of you with more time available before or after the convention. Temperatures are lovely in May - low 80's F - and there is little or no rainfall.

Natasa has already been busy and the Paphos municipality will be sponsoring our Welcome cocktail party. They are also looking into the possibility of holding it at the fort which guards the entrance to Paphos harbour and was built by the Ottoman Turks in the 15th century. On Wednesday evening we will probably sail up the west coast of the island on a sunset cruise enjoying both the glorious colours of the setting sun and views of the rugged fertile coastline. On Thursday we hope to set up a tour where we will travel to various sites finishing up inland in the Trodos mountains at the wine-making village of Omodos where we will enjoy a traditional evening. More details to follow in the January newsletter.

Cyprus Airways will be offering ID90 tickets from its destinations such as London, Paris, Frankfurt, Rome and Vienna. Many of these flights link up with American Airlines flights from the US as the two companies have a cooperation agreement. British Airways also flies to Cyprus daily and can provide good connections world-wide. As it is still early in the

season flights should not be too full.

If you have any questions, please feel free to contact me or Natasa. E-mail works best for me as I have sold my house but not yet found a new one! - hopefully I will have a new address by the January newsletter. Use my e-mail address mentioned earlier in this article. You can also write to or call Natasa at 11 Karditsis St., Nicosia-173, Cyprus. Telephone number (011) 357-2-781 526. We are both looking forward to seeing you and your friends and families in Paphos next May! ➔

Women and Flight Traveling Exhibition

**Don't miss this when you're in
one of these cities!**

Oct 17- Nov 29, 1998

**Purdue University
West Lafayette, IN**

Dec 19, 1998-Jan 31, 1999

**Wichita Center for the Arts
Wichita, KS**

Mar 13-Apr 25, 1999

**Wedell Williams Aviation
Museum, Patterson, LA**

May 15-Jun 27, 1999

**Virginia Museum of Trans.
Museum, Roanoke, VA**

Jul 17-Aug 29, 1999

**Owls Head Trans. Museum,
Owls Head, ME**

Sept 18-Oct 31, 1999

**Elmhurst Historical Museum
Elmhurst, IL**

Nov 20-Jan 2, 2000

**Minnetrista Cultural Center
Muncie, IN**

*Organized by the National Air
and Space Museum and the
Smithsonian Institution Traveling
Exhibition Service.*

International Fund

by Donna Beering

These changes to the Int'l Fund policies have recently been reviewed and accepted by the Board of Directors. All requests can be addressed to Donna Beering. Check the centerfold for current address and e-mail.

ELIGIBLE RECIPIENTS OF

FINANCIAL AID: Assistance is for members only. Extending assistance to spouses, friends or other family members may result in a member being unable to attend or being asked to reimburse the fund. Currently, only non-U.S. members will be considered for financial assistance. The convention cost is already mindful of the majority of ISA's U.S. members. This could be altered in the future, if appropriate.

QUALIFICATIONS: It is the responsibility of the member to request assistance from ISA. Requests must be received by the **February 1** prior to the convention with a brief explanation of why you need assistance. We will try to honor all requests. However, if a selection is required, it will be based on the following factors: 1) Number of years as an ISA member, 2) Whether or not she has previously received assistance, 3) Special honors that year - i.e. Captains' Club Award recipient, 4) Legitimacy of need, 5) Those who notify ISA after the deadline will be considered on a first-come basis after those who met the deadline

FUNDRAISING: The total of available funds will be established within four months of the convention. We can then notify those members who will receive

assistance and they can plan accordingly. The following methods of fundraising will be used. 1) ISA can formally ask the airline to sponsor their employee, 2) Members who have the means to sponsor, can absorb the required costs, 3) At the business meeting we can take a collection from the membership, 4) The Board of Directors will have the ability to direct excess funds as possible.

OTHER NEEDS: Some countries require letters of invitation for their citizens to leave. These and other such needs may arise and the International ISA member needs a point of contact to help resolve them. We will be working on writing appropriate letters with translations. Members with knowledge or examples of appropriate correspondence are encouraged to share it with this committee. ➔

Attention ISA Members

Take Charge of Your Financial Future Today

Constantly changing tax laws and your pilot's contract may have a significant effect on your financial, retirement and estate planning.

Serving as a financial advisor to active and retired pilots, it is important I keep you informed of issues you need to consider.

I would like to help understand your options through a complimentary consultation.

Issues to Consider:

- ✓ Tax Savings Strategies
- ✓ Retirement Planning
- ✓ Estate Planning Options
- ✓ Financing College Education
- ✓ Evaluating the Return on your Savings and Investments
- ✓ Reviewing your Employee Benefits: pension, 401(k), L.O.L.



Financial
Advisors

To schedule a no-obligation, complimentary consultation, call toll-free: **Katherine R. Morris, CFP**
1-800-300-5678 ext. 273

ISA Library

Librarian: Denise Mowat

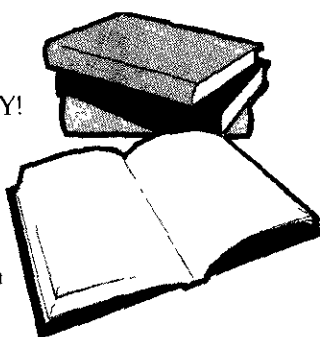
NEW TO THE ISA LIBRARY!

There was a steady flow of material in and out of the ISA Library in the last year with 31 requests for videos, CDs, and books. I'm pleased to say several more items were donated to the Library as follows: 757 Study Guide by Gail Redden-Jones; *Controlled Flight Into Terrain* (CFIT)-Education and Training Aid CD-ROM, two copies of the book "Airbus-Europe's High Flyer", and a book "IFALPA-50 years 1948-1998". These were obtained by Liz Voigt at the IFALPA conference in Montreal and donated by IFALPA. As always any donation from you of aircraft training aids in the form of videos, handbooks, diskettes and CD-ROMs would be greatly appreciated. Especially needed are materials pertaining to the DC-10/MD-11, B-777, and A-310/330/340 models.

The following items are available to members for checkout from the ISA Library:

Aircraft Videos

- BAe-146 systems review
- A-300 systems review
- A-320 pre-oral review
- B-727 systems review
- B737-200 systems review
- B737-300 systems review
- B-747 pre-oral review
- B757/767 systems review
- DC-8 cockpit review
- DC-9/MD-80 systems review
- DC-9 systems review
- MD-80 pre-oral review
- Introduction to Glass Cockpit (video and workbook)



Aircraft Systems Software

(diskettes not Windows 95 compatible unless stated)

- A-320 systems review (3.5" disk)
- B-727 systems review (3.5" disk)
- B-747 systems review (3.5" disk)
- B-757 systems review (3.5" disk & CD-ROM, two different programs)
- B-757/767 systems review - Windows 95 compatible (3.5" disk)
- DC-9 systems review (3.5" disk)
- DC-10 systems review (3.5" disk)
- CFIT Education and Training CD-ROM

Videos

- Several videos about women airline pilots
- ISA video
- Meeting the Challenge: Women in Aviation
- Menopause
- Complete Jeppesen Chart Review

Books & Pamphlets

- B-757/767 aircraft study guide
- *That's Not What I Meant! How Conversational Style Makes or Breaks Relationships*, by Deborah Tannen, Ph.D.
- *You Just Don't Understand! Women and Men in Conversation*, by Deborah Tannen, Ph.D.
- *Hardball for Women: Winning at the Game of Business*, by Pat Heim, Ph.D.
- *The Invisible Passenger: Radiation Risks for People Who Fly*, by Robert J. Barish, Ph.D.
- *Pregnancy and the Female Pilot: History and Review of Current Administrative Policies and Procedures*, report by Dr. Jacqueline B. Boyd, Ph.D.
- "In-Flight Radiation" medical bulletin
- *Airbus-Europe's High Flyer*
- IFALPA-50 Years 1948-1998 ➔

Fast Track

by Luan Meredith

Ladies! I am in the process of setting up at least one mentor from each airline. This could be your opportunity to become involved one-on-one with an aspiring pilot. Please call/fax/e-mail me if you would like to assist someone who wants to grow up to be just like you! This could

be your "ONE THING FOR ISA" this year.

If you're in the career search mode, remember we have access to information about hiring at all current airlines through the generosity of Captain Kit Darby of Air Inc. at 1-800-AIR-APPS.

I can be reached at 314-845-7282; fax: 314-845-0399; e-mail: 76221.2731@compuserve.com ➔

ISA On-Line

Visit the ISA Website at www.isawp.org

- Current ISA events
- Informative articles reprinted from the ISA News
- ISA activities and more!

Ginger Cutter, Webmaster

COMMITTEE REPORTS

ISA's Captains' Club

by Patty Barrera

This year is off to a great start with six new captains set to receive their Captains' Club plaques in Cyprus. Congratulations to the following members:

Ann Bennett	Qantas	B747-200/300
Jamile Costa	Atlas Air	B747
Michele Dionne	Continental	B737-3/5/7/800
Suzanne Skeeters	Northwest	DC-10
Camilla Sommar-Rale	Finnair	MD-80
Mireille Wildschut	Transavia	737-300

For those ISA members who are captains and have not yet joined the ISA+ 21 Captains' Club, please fill out the slip located in the center of the newsletter and send it to me. Or, you can e-mail me with the information. I will then contact you to confirm I received the information. Later in April, I will send all inductees a letter with more details regarding their plaques, which will be formally presented to them at the convention.

Many thanks to Lisa Kuehl for her excellent work as Captains' Club chair. She has handed over to me a well-organized system, for which I am grateful. I look forward to receiving more notifications of captain upgrades. At the rate we're going, I think this will be the biggest year yet! ➔

MEMBERS IN THE SPOTLIGHT

FedEx Women Gathering

by June Viviano

WHERE - MEM, Cafe Espresso, Ridgeway Inn, Poplar & 240

WHEN - NOON - 2nd Tuesday of every month

AND

WHERE - EWR, Hurricane Island Restaurant, 1303 3rd Ave (between 74th & 75th ST), Manhattan Island

WHEN - 1:30 - 3rd Monday of every month

.....

WHO - EVERYONE is invited, including family members (don't miss it because you can't get a babysitter).

WHY - To establish a network of support and camaraderie among ourselves, AND enjoy some quality time together (outside of the ladies restroom at work!)

The FedEx women pilots have

begun a long-term networking program. We are actively recruiting ISA membership within our company to bring everyone into ISA to gain access to all the benefits available from this great group. We presently have 33% participation, and will strive for 100%. Communication within our group will be by this newsletter, regularly scheduled luncheons, and of course, phone and internet.

With two, soon to be three, women in various management positions, concerns can be directly stated to upper management. As of today, pilot recruitment, maternity issues and sexual harassment concerns have been elevated to an active evaluation level by upper management.

An informal data bank called "Care To Share" (also known as "Been There, Done That, Still Paying The Bill") has been initiated, with women who would be willing to talk about life-events with others going through the

same thing. This information is listed and PRIVATELY disseminated as requested.

In addition to the ever-growing ISA Library, a library of diversity education materials is being developed at Flight Administration, and the two should provide a wide range of resource material for our pilots.

I'd like to stress that ISA is THE vehicle for women airline pilots to join, support and contribute to as you are able. Especially if you are busy, your input and opinion are very important in those areas occupying your time. A quick note to the newsletter, another pilot in the same situation, or an e-mail to state your concerns is what its going to take to improve our organization, and pilots' lives in general. Please make that effort, take that minute, and NETWORK. We'd love to hear from YOU.

Captain June Viviano
Duty Officer - FedEx
901-224-5436 ➔

MEMBERS IN THE SPOTLIGHT

Rancho La Puerta: health for the body, mind and spirit

by Lynn Austin and Patty León

During the last week of August, our silent auction top bid took us to Rancho La Puerta, in Tecate, Mexico. This health spa prides itself on offering an extensive choice of classes ranging from aerobics to meditation with pampering in between. The key to making it thru the week was not focusing on the "pain", but rather on "total muscular awareness."

The extraordinary staff at the Ranch accomodated our every need. We stayed in our own beautiful villa, looking out over the valley and Mt. Kuchumma.

Our vegetarian diet was carefully selected and prepared by Chef Bill Wavrin and his staff. Not being vegetarians ourselves, we were surprised to find that we didn't feel deprived.

Our days started at 0630 with 3-5 mile hikes. Throughout the day our schedules were full of step, cross-training, Yoga, massages and facials. After dinner, we looked

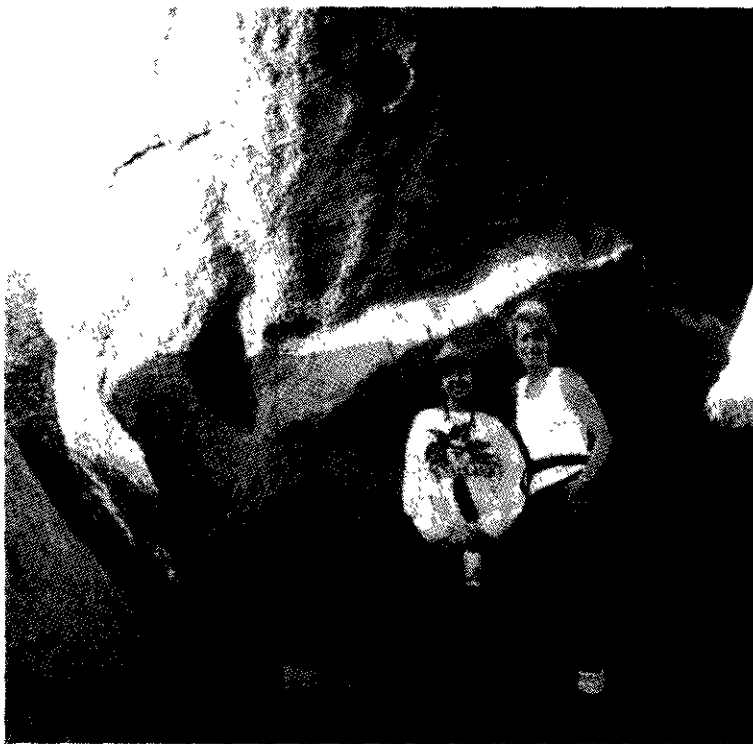
forward to a movie, or a motivational seminar.

The week left us feeling rejuvenated and with a great desire to return. We highly recommend this spa to all ISA members and their spouses. Thank you Pam Mitchell for finding this treasure. We look forward to bidding on this spa again next year.

For more information call 1-8-443-7565 or check their website at www.rancholapuerta.com

In closing, we offer to you our mantra for the week:

"OOOOOOOOOOOOOOOOOW
WWWWWWWWWWWWWWWWWW
W!!!!!!!!!!!!!" ➔



ISA Member, Becky Howell, (far right) receives the Woman Pilot Magazine's Recognition of Excellence Award, 3/98

ISA Members Organize a Flying Day for Abused Teens

June 11, 1998 - Olive Branch Airport, Olive Branch, Mississippi. ISA Members Keith Johnson and Lisa Ash (2nd from left) organized an "Introduction to Flying" Day for the students of DeSoto Sunrise Home. Eight girls and 3 boys got a chance to fly a Cessna 172 and learn about navigation and flight planning. Desoto Sunrise Home is a group home which provides permanent residences and therapy for teenagers who have been subjected to family neglect/abuse.

→



ISA EXCURSIONS

ISA Bicycle Days July 16 - 19, 1998

by Kathleen Malone

Paradise Found...a truly fitting description of the Colorado Rocky Mountain summer. The spectacular scenery of this majestic range provided an exquisite backdrop for the adventurous pursuits of ISA mountain bikers and friends as they negotiated heart-pumping hills, challenging descents, and rolling single track.

Cindy Shonk hosted the second annual ISA Bicycle Days which began Friday morning with a beautiful ride through the wildflower-laden hills surrounding Keystone. After enjoying a picnic lunch we rode the gondola up Keystone ski mountain for an exciting downhill tour. That evening we were joined by the ISA motorcycle enthusiasts completing their adventure and were treated to Cindy's highly acclaimed hospitality for dinner. We had a terrific time swapping stories and making plans for the next day's activities.

Saturday morning we were off to Vail for the 20-mile ride back to Dillon, thanks to the gracious shuttling service of some of Cindy's house guests! The path

past Lake Dillon, then back to Cindy's. Afternoon riding options included another wildflower trek around Keystone. That evening we enjoyed the diverse musical talents



Alicia Chalmers, Cindy Shonk, Connie Tobias, Jennifer Nicholson, Kathleen Malone, Maggie Rose in front of Lake Dillon, Keystone, Colorado

was alive with activity as we were joined by riders participating in a charity ride and others out enjoying the fabulous weather of a magnificent Colorado weekend. We stopped for a picnic lunch at a picturesque lake and were off again, through the town of Dillon,

of the band "Runaway Express" at a (free!) concert in Dillon.

Our adventure concluded Sunday as we all departed and thanked Cindy for opening her mountain home to us for a most enjoyable sojourn. →

ISA EXCURSIONS



2nd Annual ISA Santa Barbara Lunch Fly-In January 19, 1999, 1:30 pm

Mark Your Calendars NOW -- 2nd Annual ISA Santa Barbara Lunch Fly-In at our favorite On-The-Beach (waves lapping at your chairleg!) restaurant (The Beachside) will be held on Tuesday, January 19th at 1:30 pm. Transportation from SBA airport and/or driving directions from Los Angeles (1+45) to the event will be provided upon request. There are

several nice hotels in the area for a RON. Easy jumpseating from SFO, DEN, LAX, PHX and SJC.

Join us for some R&R on Tuesday, January 19th.

Contact Karen Kahn, 805/687-5859, e-mail KarenKahn@CompuServe.com or fax 805/687-6226 →

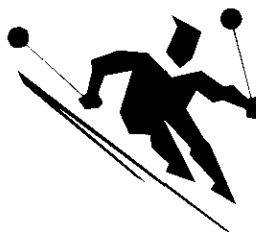
1999 ISA SKI DAYS FEBRUARY 8 - 11 at Colorado's Keystone Ski Area

It's time to start planning for the annual ISA Ski Days for next year. It's pretty much an established event now, the second week of February. This year it will be February 8 - 11, a Monday through Thursday. It is possible that the next newsletter will arrive at your homes after the Ski Days registration deadline of **January 21**, (or the day after your monthly bids close), so please think ahead if you'd like to attend.

If you need further details toward the end of December please send me an e-mail, and I'll put you on

the e-mail list to receive information.

It'll be much as years past, arrive Monday - Tex-Mex dinner on Monday night; Ski Tuesday and Wednesday and possibly Monday



and Thursday depending on your arrival and departure flights. The Tuesday night dinner is at one of Keystone's finest restaurants with possible ice skating afterwards. Wednesday night is the pizza

party at the Board of Directors condo. I usually get two or three condos close together, and the price comes out to about \$53 per person per night. Or if you want more privacy, you are welcome to make your own lodging arrangements.

Some members rent cars and some ride the van service that runs from the Denver Airport right to my house or to the ski resort.

Please let me know as soon as you can if you plan to attend. Think snow.....but please, not until December.

For further information or sign up, contact Cindy Shonk at cindyshonk@compuserve.com, 830-964-3295 or 970-468-0626 →

OF SPECIAL INTEREST

ISA Members requested to participate in several studies...

ISA has received several requests from different sources that our members be involved in research studies. Instead of publishing each inquiry (and we certainly wouldn't give out our address list), we will be printing out the requests here. If you are interested, please contact the parties directly and let them know that you would like to be involved.

(1) An ambitious high school student, Lauren Blalock, is

creating a website on women in aviation for the national contest called ThinkQuest. She would like to hear from women aviators and ask 10 questions to complete a survey about your career. She would greatly appreciate any help. Her e-mail address is: LLBean3@sprintmail.com.

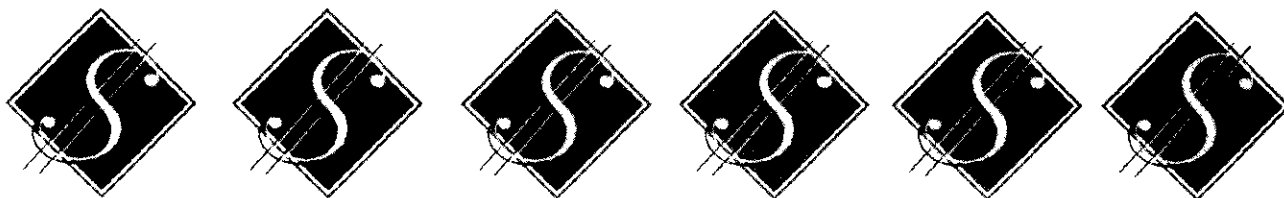
(2) Embry Riddle graduate student, Warren Cook, is working on his graduate research project entitled, "Pilot Opinion of the Mandatory Age 60 Retirement Rule". He needs to survey 100 Part 121 U.S. airline pilots. He is

available by e-mail at cook@compuvision.net. All information and participants will be kept confidential.

(3) Dan Morrow, Research Assoc. Prof. of Psychology at the Univ. of New Hampshire, is conducting research related to aging and pilot communication performance. Right now the studies are laboratory-based, but later studies will be sim-based. He is trying to make sure that he gets a fair representation of women pilots in the study. If interested, please call him at 603-868-1657. →

"High Finance": Having Your Own Investments May Pay Off

by Katherine Morris



(ed. note: This is the second in a series of financial articles that will be printed in the ISA News. With apologies to our non-U.S. members, this information will probably be pertinent only to our members who invest in the United States.)

Chances are you've earned your own money. It's very likely that you spend your own money.

So why not consider investing your own money?

If you are like many married women - even those employed outside of the home - the majority of your assets may be kept in joint accounts. For today, and perhaps for years to come, that may be an easy and uncomplicated way to arrange your family's finances. But, what happens if you hit a bump in the road, like divorce or death of your spouse? Those situations could be unpleasant financially, as well as personally, if you don't have investments in your own name and have some experience managing them

Why joint ownership? Couples usually take the "joint ownership" path because under such rights, each owner has an undivided interest in the property and can't sell it without the consent of the other owner. It seems like a practical solution, with the biggest advantage being avoidance of probate when one of the spouses passes away. There are, however some disadvantages to joint ownership that you should be aware of when setting up your investment accounts.

The case for holding assets in your own name: According to American Demographics, April 1996, three of four women are single when they die. While that's an unpleasant statistic, it's one that needs to be faced realistically. You must prepare for the day when you could be managing your finances on your own — either due to the death of your husband or divorce. This preparation supports the case for having your own investments now.

In addition to a couple of the most important payoffs — being an educated, informed investor and having

financial independence — there are some other ways you can benefit from having individual investments.

Reducing or eliminating estate taxes: While avoidance of probate with joint ownership may be beneficial, it can also create a significant estate tax obligation with larger estates. As a result of the Taxpayer Relief Act of 1997, the amount that can be passed to heirs tax free will be raised gradually from the current \$600,000 to \$1 million in 2006. If your combined estate is getting up into the taxable range, it will benefit you to move assets into each of your names so that you can both take advantage of your maximum tax exemption.

If you think that sounds like a lot of money, you may be surprised at how large your estate has actually become. When you consider your home, personal assets, your investment portfolio, pensions and other retirement plans, you'll probably find that your family has accumulated substantial assets. If so, it's time to consult with an attorney or financial advisor to discuss individual asset ownership.

Self-protection: If your husband becomes incapacitated, you can't sell, borrow against or gift jointly-owned property without permission from the courts (unless you had enough foresight to prepare durable Powers of Attorney in advance). That means unless you held assets in your own name, you could find yourself in a cash crunch in the event of your husband's debilitating illness or injury.

Potential liability: Jointly-owned property can be open to creditors of either spouse. Therefore, income and assets that you have contributed to your joint accounts could be confiscated if a liability judgment or business debt is owed by your husband. While holding property in your own name isn't foolproof protection against claims, it offers more protection than joint ownership.

Having your own investments doesn't mean that you don't love or trust your spouse. It simply makes sense

(continued on page 21)

"Layover Leisure"

(continued from page 1)

up at major hotels, Boston Common, Copley Place, or in front of the New England Aquarium on Atlantic Street.

If a morning run or walk is part of your daily regimen, a favorite route for Boston joggers is on the Esplanade, along the Charles River. It is a scenic and fairly level course where you can run for miles.

Boston's most famous and largest museum, the Museum of Fine Arts (MFA), located between Huntington Avenue and the Fenway, is a "must see." It is ranked second only to the Metropolitan Museum in New York City, and contains extensive collections from all over the world.

Two blocks west of the MFA stands the Isabella Stewart Gardner Museum. This eccentric woman was an enthusiastic art collector

who brought home treasures from frequent trips to Europe in the late 1800s, filling this beautiful Victorian mansion.

If shopping is on your mind, there is plenty to choose from. There are four distinct areas in Boston that are a shopper's paradise. The most popular spot is the Fanueil Hall Marketplace. It is the jewel of the crown of the city's waterfront restoration project and one of the most successful retail developments in the country. It has small shops, kiosks of every description, street performers and a food selection that will satisfy any appetite.

A second major shopping area is Newbury Street and Boylston Street, also known as Back Bay — Boston's version of New York's Fifth Avenue, very chic and trendy. If antiques suit your decor, Charles Street might be where you go, combining the best of the past and

the present displayed in beautiful shops. Finally, Downtown Crossing offers the famous discount outlet, Filene's Basement — if you are looking for a bargain. But many other traditional shops that would be found at any mall are nearby. No trip to Boston is complete without browsing through "the Basement."

After a long day playing tourist, head to the North End, also known as the Italian District. It features dozens of delicious and affordable restaurants, bakeries and cafes on Hanover Street that runs through the heart of the district. The Freedom Trail also runs through the North End, making it easy to combine a walk with lunch or dinner. With a selection of nearly one hundred restaurants to pick from, choosing one could be the most difficult decision you make all day — and you can't go wrong! ➔

20th Anniversary ISA Video

produced by Beverley Bass and Stephanie Wallach

Spanning 20 years of their aviation careers, a "then and now" scenario with candid interviews of 17 of the original ISA 21 charter members

"We hoped to spark all emotions. Happy, sad, and funny, but most of all just a historical reminder of how it (ISA) all began." — Beverley Bass

This 30-minute long video* can be yours for only \$25.00, which includes Postage and Handling. There are only a limited number available. GET YOURS NOW!

Send your check in U.S. Funds to:

Beverley Bass
4609 Dartmoore Lane
Colleyville, TX 76034

*currently this video is only available in NTSC format.

"High Finance"

(continued from page 20)

for you to be in control of your own future. Chances are you've spent a great deal of time over the years making sure that others in your life are well cared for. Isn't it time that you did the same for yourself?

If you have questions about the issues around joint and individual ownership of assets, a knowledgeable financial advisor can help you sort out the facts and help make sure you're on the road to your financial goals.

Katherine Morris is a Certified Financial Planner and Senior Financial Advisor with American Express Financial Advisors. This article should in no way be considered a solicitation of services. It is for your general information only. ➔

THE ISA STORE

The ISA + 21 Store was designed and conceived for the dual purpose of providing logo merchandise for our membership while lending support to the ISA General Operating Fund. The ISA Logo was developed through the creative efforts of ISA's graphic artist Lisa Kuehl. The following is a brief description of some of the items currently available for purchase.

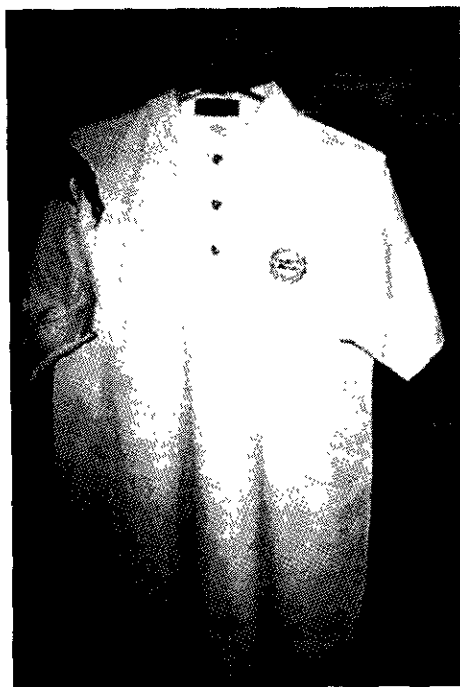
Two New Products Introduced At Las Vegas!

The ISA Store is pleased to announce two new ISA logo products for your shopping enjoyment! The ISA logo Thermal Traveller is a 16 oz. thermal mug designed to fit into most auto and aircraft beverage wells. It is made in the USA of quality plastic and has a secure 'sip' lid to keep your hot or cold beverage securely in place during take-offs and landings. It features the distinctive ISA logo, is dishwasher safe and fits easily into your flight bag because it is long and slender and has no handle. \$10.00

Also new this year - the ever-needed Luggage Tag with the ISA logo. It features a clear pocket on the back for your name and address or business card. \$3.00 ea. Both of these items also make great gifts.

ISA Logo Polo Shirt

One of the newer arrivals to the ISA store is the Polo Shirt, which made its debut at the meeting in Ft. Worth (see photos). This 100% pique cotton, high quality polo shirt is embroidered with the distinctive ISA logo and is available in white or navy. It's available in SM, M, LG and XL for the unbelievable price of \$25.



Polo Shirt

ISA Notecards

The ISA logo is imprinted on these cards in silver ink on white linen card stock, with matching white linen envelopes. These cards, developed for the ISA Store by Pam Mitchell, are blank on the inside and are packaged in sets of 15 for \$5.

ISA Lapel Pins

We finally have a new shipment of them and for those of you who don't have one yet, they make an excellent tie tack for your uniform. They feature the ISA logo in gold on a black background and sell for just \$4.00.



Gold and Black Lapel Pin
"twice the size"

ISA T-Shirts

The ISA logo is printed in gray ink on a white background on this T-shirt, only available in L and XL for \$15.

ISA Decals

This round decal highlights the ISA logo in blue ink with gray lettering, imprinted on glossy white paper. A great flight bag and crew luggage sticker, it just may prevent another pilot from mistaking your bag for his! Only \$1 each.

Las Vegas 20th Anniversary Commemorative T-shirts

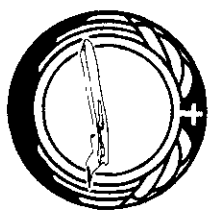
If you missed the opportunity to purchase a 20th anniversary T-shirt at the meeting in Las Vegas, we still have a few left in Large and X-Large \$10.00 each. Logo is shown below.



Thank You To Everyone Who Patronizes The ISA Store!

All proceeds go to the ISA General Operating Fund and help promote our organization. Suggestions for new products are ALWAYS welcome!

To place an order, send to Carol Cansdale, 6281 Mallory Lane, Eden Prairie, MN 55346-1424 or 70263.67@compuserve.com; phone: 612-906-2833. Please make your checks payable to ISA +21. Or see the centerfold for your order form. ➔



International Society of Women Airline Pilots

...is PEOPLE AND ACTIVITIES

ISA+21 is an association of women airline pilots from the world over who have joined together to exchange ideas and information regarding their profession. ISA links a wide range of aviation backgrounds and experiences. ISA members assist aspiring women pilots entering the industry through an information bank, networking, scholarship, and service projects.

...is HISTORY

In 1978, twenty-one women pilots from ten U.S. airlines met in Las Vegas to share common interests. Today, ISA+21 numbers over 580 members worldwide from 96 airlines and 36 countries.

...is A PLACE TO MEET FRIENDS

Each May, ISA members and their guests meet for three days of relaxation, recreation and professional exchange. Previous convention sites include Amsterdam, Atlanta, Bangkok, Cancun, Denver, Helsinki, Jamaica, Las Vegas, Maui, Memphis, Rome, San Diego, Seattle, Sydney, Toronto, Vancouver, and Washington, DC. A highlight of the gathering is the Captains' Club presentation, which gives special recognition to members who have completed their left-seat checkout during the previous year.

...is EDUCATION

ISA Speakers' and Information Bank is women helping other women overcome the unique obstacles encountered in pursuing an airline pilot career. The Speakers' and Information Bank also involves our members in speaking at local schools and colleges, civic clubs, and other community gatherings. A short program can be arranged with prior notice to ISA. ISA maintains a library of aircraft system review

video tapes, software, and other videos and books of interest to pilots. All of the materials have been donated and are available for members free of charge.

...is SCHOLARSHIP

ISA has established scholarships for women pilots who have demonstrated their commitment to careers as airline pilots. Awards are used for advanced pilot ratings and type ratings. In addition, funds allowing, the Fiorenza DeBernardi Merit Award and the Holly Mullins Memorial Scholarship will aid those pilots who have not yet attained their professional pilot ratings. Tax-deductible contributions may be made to "ISA + 21". Please send to the address below, Attn.: Treasurer

...is ENTERTAINMENT

Husbands of Airline Pilots (HALP), ISA's auxiliary, assists at various ISA projects and functions. We welcome their support and applaud their unflagging efforts to provide aid and comfort to ISA members.

...is FOR YOU

ISA welcomes all women pilots who are employed as flight crew members (Captain, First Officer, Second Officer) or who hold seniority numbers with an air carrier (FAR Part 121 or non-US equivalent) which operates at least one aircraft with a gross weight of 90,000 lbs / 41,000 kgs or more. Applicants need not be flying that large an aircraft themselves. If you meet these requirements, we cordially invite you to join us.

**ISA membership application
on reverse**

ISA 2250 E. Tropicana Avenue, Suite 19-395, Las Vegas, NV 89119-6594 USA

Looking for that one newsletter you're missing to fill out your collection of ISA News?

Or maybe there's a great article that you'd like to share with your union or airline...

Wrote that perfect article and had it published in the ISA News and now you want to share your glory with your grandparents and in-laws...

Now you can get extra copies of past and current newsletters, and also get professional copies of individual articles from your newsletter committee.

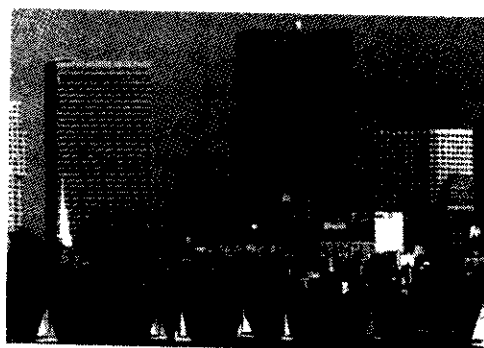
Newsletters USD\$6.00 (US Domestic)
 USD\$7.00 (outside US)

Articles USD\$2.50 (US Domestic)
 USD\$3.50 (outside US)

To request newsletters or articles, or get additional information, contact Ginger Cutter, ISA News Managing Editor. She can be reached at:

191 Bridgeport Drive
Half Moon Bay, CA 94019 USA
Phone: 650-728-0854 Fax: 650-728-8502
E-mail: gmcutter@aol.com

ISA Board of Directors Fall Meeting Boston, Massachusetts November 11, 1998



The November ISA Board of Directors meeting will be held in Boston, Massachusetts on November 11. Please contact any current Board Member for time and location.

We encourage and we welcome any and all ISA members to join us!

 Renewal

*If you are currently on leave, retired, or furloughed, you may be eligible for Inactive Membership (USD \$15 contribution), which will entitle you to full participation at a reduced rate. Please include this information below.

Previous airlines/positions/equipment flown (please include employment dates):

Background: Military _____ Civilian _____

Do you have other skills, talents or interests you may be willing to share with us?
(e.g. writing, public speaking, fund raising?) _____

Children? Names and ages

Spouse/Partner name

How/from whom did you hear about ISA?

Do you wish to be included in an ISA-approved mailing list of products and services?
Yes _____ No _____

By your signature on this membership application/renewal, you agree that all photographs, reproductions, articles, software and other properties and information submitted by you to ISA have not been previously copyrighted and henceforth become the property of ISA unless otherwise agreed upon in writing.

Signature _____ Date _____

Please make check or money order payable in US funds to "ISA."

All Members may also use VISA or MasterCard

Name on card: _____ Card number: _____

Card Expiration Date: _____ Signature _____

ISA+21 International Society of Women Airline Pilots

welcomes all women pilots who are employed as flight crew members (Captain, First Officer, Second Officer, Flight Engineer) or hold seniority numbers with an air carrier (FAR Part 121 or non-US equivalent) which operates at least one aircraft with a gross weight of 90,000 lbs / 41,000 kgs or more. Applicant need not be flying that large an aircraft to qualify for membership

Mail to: Denise Mowat, ISA Membership Chair

W12347 848th Ave., River Falls, WI 54022 USA



International Society of Women Airline Pilots

2250 E. Tropicana Avenue, Suite 19-395
Las Vegas, NV 89119-6594 USA

Bulk Rate
Postage Paid
Half Moon Bay, CA
PERMIT NO. 55